



Eastern Idaho Community  
Action Partnership  
**ANNUAL REPORT**

**2 0 2 3**



# Table of Contents

<b>1</b>	Letter from the Chief Executive Officer
<b>2</b>	Letter from the Board President
<b>3</b>	Community Action Promise and Mission Statement
<b>4</b>	The EICAP 2024—2028 Strategic Plan
	Results: Statistics and Success Stories of Building a Stronger Community...
<b>6</b>	One Life at a Time
<b>8</b>	One Child at a Time
<b>10</b>	One Meal at a Time
<b>12</b>	One Home at a Time
<b>13</b>	One Partnership at a Time
<b>14</b>	One Volunteer at a Time
<b>15</b>	One Employee at a Time
<b>16</b>	One Education at a Time
<b>17</b>	Food Pantry & Energy Assistance Thank You Letters
<b>18</b>	2022 Report - Financial Audit Results
<b>21</b>	Birth to Five - Proposed Budget and Services
<b>23</b>	Birth to Five 2022-2023 School Year Report
<b>29</b>	Event Photos

# From the Chief Executive Officer



Our 56th year, and Eastern Idaho Community Partnership is leading the way in helping people emerge from crisis. We have seen a year of transition, growth, and a new vision for our future! As the new CEO of EICAP, I am so fortunate to lead our incredible staff.

The staff has been my focus as I have led EICAP this past year. The leadership team has worked to ensure a strong, stable workforce. As an organization we must focus on our core and the employees who do the work of helping people and changing their lives. We worked to implement a wage study commissioned from the Board of Directors, which has had an impact on retaining and attracting fantastic employees in our work, through higher and more competitive wages. The work we do is so important, the wages should reflect that importance.

EICAP's Board and our strategist completed the work of the Strategic Plan for EICAP this past year. This was the outcome of months of meetings, interviews, leadership meetings and a Board retreat. It is inspiring to see the vision we will be implementing. It includes these 5 Strategic Initiatives:

- Foster a strong & stable EICAP Workforce
- Renew and Expand Head Start
- Create Regional EICAP Awareness and Engagement
- Seek Charitable support and Establish Social Enterprise Revenue Stream
- Add Select Mission-Centered Programs

We have seen our Head Start Program renewed and energized. Head Start is now approaching full enrollment, after years of chronic under enrollment. We were able to see these changes through the efforts of our amazing teachers, aides, center managers, cooks and the entire Head Start team. We were able to make tough financial choices that allow us to shift spending to invest in our employees in Head Start, allowing them to serve the kids they love.

This year has also brought other meaningful accomplishments, including helping Driggs retain its only daycare. We were able to use EICAP property to house the only remaining Driggs daycare, who was contemplating closing due to excessive costs of rentals in Driggs. We added six new members to our Board of Directors. In bringing in this new expertise we were also able to include more voices from our community and the clients we serve. We continue to work to bring more diversity to the board and to find strong voices for those in our community that need a hand up and not just a handout.

We look forward to the future as we build on this foundation of service and empowerment. Looking forward, we are stronger and more capable of serving our communities throughout Eastern Idaho.

Thank you,

**1**

**John Radford, CEO**

*Eastern Idaho Community Action Partnership, Inc.*



# From the Board President

As the President of Eastern Idaho Community Action Agency (EICAP), it is with great pride that I present the annual report for 2023. This report encapsulates our efforts and achievements serving the communities we represent and advancing our mission.

Over the past year EICAP has continued to make significant strides in addressing the pressing needs of the communities we serve. The dedication of our staff is beyond description. I am proud to report that despite the many challenges they face, they always remain steadfast in their commitment to providing essential services and support to those in need. They touch the lives of so many individuals and families, empowering them to overcome obstacles and achieve brighter futures.

None of this would be possible without the unwavering support of our community partners, donors and sister organizations. Your generosity and commitment to our cause have been instrumental in driving positive change and making a meaningful impact in the lives of those we serve. I would also like to offer my deepest gratitude to our all-volunteer Board of Directors for the hours dedicated to supporting our staff and communities.

Looking ahead, through the development of our Strategic Plan, EICAP is poised to build upon the momentum of 2023 and continue our mission-driven work. Together we will strive to reach even greater heights and make the communities that we serve even better places for all.

On behalf of the Board of Directors, I extend my sincerest gratitude to everyone who has contributed to our success. Your support fuels our passion and strengthens our resolve to create more.

Thank you for your continued partnership and belief in our mission.

Warm Regards,

**Devon E. Jackson**

*EICAP Board of Directors*



## **Community Action Promise**

Community Action changes people's lives, embodies the spirit of hope, improves communities, and makes America a better place to live. We care about the entire community, and we are dedicated to helping people help themselves and each other.

## **EICAP's Mission Statement**

Eastern Idaho Community Action Partnership helps and empowers at risk individuals and families meet their basic needs and increase their independence through support and education.

# **The EICAP 2024—2028 Strategic Plan**

## **Closing the EICAP Covid Chapter**

## **The New EICAP Chapter—Renewing & Growing**

### **New EICAP Mission & Values**

### **The EICAP Strategic Pillars**

- 1.** The people of EICAP empower families, providing programs that foster self-sufficiency.
- 2.** The people of EICAP educate young children, teaching essential skills in a caring environment.
- 3.** The people of EICAP serve at risk individuals, offering essential services to meet basic needs.

### **The EICAP 2024—2028 Strategic Initiatives**

- 1.** Foster Strong & Stable EICAP Workforce
- 2.** Renew & Expand Head Start
- 3.** Create Regional EICAP Awareness & Engagement
- 4.** Seek Charitable Support & Establish Social Enterprise Revenue Streams
- 5.** Add Select Mission-Centered Programs

### **The EICAP Short-Term Task Force Initiatives**

- 1.** Mission, Values & Vision Stakeholders
- 2.** EICAP Housing Paradigm Report
- 3.** Regional Realignment Task Force
- 4.** Board Selection & Election Process Task Force
- 5.** EICAP Regional Convening Agency

# Building a stronger community

**5,466**

Transportation  
boardings for  
seniors

**2,368**

Hours of  
Homemaker  
assistance for  
frail seniors

**2,989**

Information &  
Assistance staff  
provided or  
referrals

**2,411**

Hours of  
Respite services  
provided to  
caregivers

**145**

Consultations  
provided by the  
Ombudsman  
Program

**229**

Adult  
Protection  
reports  
investigated

**231**

Hours of legal  
assistance to  
seniors

**9**

Caregivers  
participated in  
the Caregiver  
Support Group

**86**

Orders (around \$200  
per order) of needed  
incontinence supplies  
were provided to low-  
income seniors over  
the age of 60



## Area Agency on Aging

The Aging Program provides many services to those who are age 60 and older. Such services include:

- In-home services
- Ombudsman assistance
- Legal advice, counseling, and representation
- Adult protection for abuse, neglect and exploitation
- Caregiver support and respite offering free time to caregivers
- Resources and support to grandparents raising grandchildren
- Congregate Meals and Home Delivered Meals
- Evidence-Based Health Promotion and Caregiver workshops

# one **LIFE** at a time.

**15,313**

Total unduplicated  
number of all  
INDIVIDUALS served

**11**

The number of  
households who  
maintained safe and  
affordable housing for  
90 days

**38**

The number of  
individuals who  
demonstrated  
increased nutrition  
skills

**6**

The number of  
households who  
avoided eviction

**83**

The number of Seniors  
(65+) who maintained  
an independant living  
situation.

**6**

The number of  
households who  
maintained safe and  
affordable housing for  
180 days

**16**

The number  
of households  
experiencing  
homelessness who  
obtained safe  
temporary shelter

**5**

The number of  
households who  
obtained safe and  
affordable housing

**7,601**

Total unduplicated  
number of all  
HOUSEHOLDS served

**98**

The number of  
individuals with  
disabilities who  
maintained an  
independent living  
situation.

Below are photos of some of the recent upgrades made to the Madison Senior Center in Rexburg:



New parking lot



New dishwasher



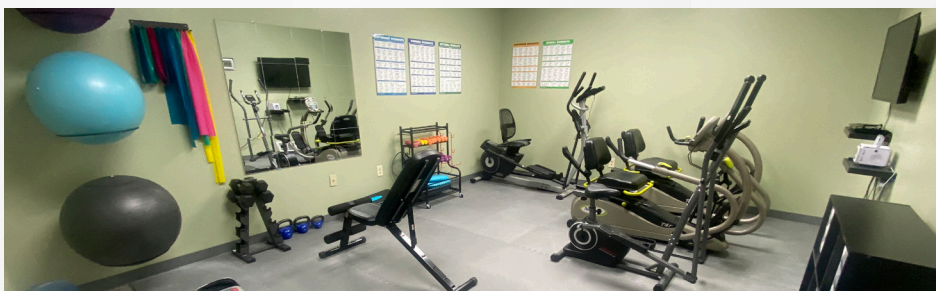
Kitchen renovation



Donations



New flooring in community room



Renovated workout room



New herb garden



# Building a stronger community



## Head Start Program

EICAP's Head Start and Early Head Start program provides fun and engaging, high-quality, educational services to children ages 0 to 5 throughout 5 centers. Our Early Head Start centers provide comprehensive early child development for infants and toddlers ages birth to 3. We operate one Early Head Start Center in Idaho Falls and one Early Head Start center in Blackfoot. Our Head Start centers focus on school readiness by enhancing children's cognitive, social, and emotional development from ages 3 to 5. We operate two Head Start centers in Idaho Falls, one in Blackfoot, and one in Rexburg.

Within the classroom, staff are dedicated to keeping children safe and helping children grow, while ensuring the children in our care are kindergarten ready. Head Start is the nation's premier pre-school program, differing from others, because services are not limited to the classroom or the child. Our support staff works with the families to foster relationships, build upon families' strengths, help families set goals, support the family's well-being, and increase self-sufficiency. We strive in helping parents understand their important role in being their child's first, and most influential teacher! Parents and caregivers are encouraged to be involved in their child's education so they can bring the love of learning from the classroom to their home.





# one **CHILD** at a time.





# Building a stronger community

## Salmon Food Pantry

The Salmon office is dedicated to assisting community members in need. Whether that need is education, heat assistance, food, or just information on who to talk to next. We strive every day to provide our clients with a positive interaction and with the knowledge to improve their circumstances. We partner with a variety of community members from businesses, other nonprofits, and schools to individual community members that wish to be part of building their community up and assisting those most vulnerable.

- **1,739** – TEFAP – Food Boxes distributed
- **1,747** – Community Donations – Food boxes with Community Donations distributed
- **439** – CSFP – Food Boxes distributed



Scouting for Food drive



Coffee donation



Starter plants donated to the Salmon Office for clients to grow their own vegetables

# one **MEAL** at a time.

## Challis Food Pantry

- **428** – TEFAP – Food Boxes distributed
- **426** – Community Donations – Food boxes with Community Donations distributed
- **143** – CSFP – Food Boxes distributed

**99,073**

Home Delivered meals  
served to seniors

## Rexburg Food Pantry

- **1,466** – TEFAP – Food Boxes distributed
- **1,466** – Community Donations – Food boxes with Community Donations distributed
- **490** – CSFP – Food Boxes distributed

**36,214**

Congregate Meals  
served to seniors



Fall River Electric donation to the  
Rexburg Food Pantry



Donation to the Rexburg Food  
Pantry

**3,634**

# of TEFAP food  
boxes distributed  
(The Emergency Food  
Assistance Program)

**3,634**

# of boxes  
distributed with  
Community  
Donations



Fresh strawberries donated to the Rexburg Food Pantry



**1,073**

# of CSFP food  
boxes distributed.  
(Commodity  
Supplemental Food  
Program for Seniors)



# Building a stronger community

**4,316**

Eligible households received LIHEAP (Low Income Home Energy Assistance) services

**250**

Eligible households received Energy Assistance (Through Energy Assistance Local Funds)

## Housing

Eastern Idaho Community Action Partnership, Inc. continues to provide affordable housing across Eastern Idaho with 10 properties located in Blackfoot, Idaho Falls, Roberts, Rexburg, and St. Anthony, Idaho. Of the 323 units EICAP owns, 98 units are dedicated to Senior/Disabled individuals and a total of 224 units and one home are dedicated to low-income individuals/families.

**2,616**

Received LIHEAP Heat assistance

**67**

Project Help - households received assistance using Project Help (City of Idaho Falls)

Syringa Property Management continues to provide management and oversight of day-to-day operations of EICAP's housing portfolio. Several maintenance projects and improvements at the properties were completed during the year.

**377**

Received LIHEAP Emergency assistance

**1,323**

Received LIHEAP Crisis assistance

We invested thousands of dollars of improvements to our facilities. At our Teton View Apartments facility we replaced the perimeter fence, with a new vinyl fence. At Market Lake we replaced the siding that had been failing for a long time. The new siding is beautiful and adds a sense of pride for the tenants.

**829**

Eligible households received LIHWAP (Low Income Home Water Assistance Program) services. Assistance with household drinking and wastewater expenses. Program ended May 2023.

**32**

Lend A Hand - households received assistance using Lend A Hand (Rocky Mountain Power)

**21**

Project Warmth - households received assistance using Project Warmth (Intermountain Gas)



**7,601**

Total unduplicated number of all HOUSEHOLDS served

**89**

Local Funds - households received assistance using other local funds donated to the agency



# one HOME at a time.

## Weatherization

Weatherization worked on and completed 76 homes with an average cost of \$11,528.00. We served a total of 234 customers, 36 were disabled, 110 were children, and 36 were elderly.

We completed 39 homes in Bonneville County, 4 in Butte County, 1 in Custer, 6 in Fremont County, 16 in Jefferson County, 1 in Lemhi County, and 9 in Madison County.

Measures that we did include: new windows, new exterior doors, attic, floor and wall insulation, infiltration measures, (this includes, weather stripping old doors, replacing broken glass, sealing heat ducts, replacing dryer vents) we also installed duct insulation, smoke alarms, CO detectors, replaced old refrigerators, repaired or replaced water heaters and heating systems. We spent a total of \$876,157.00 on the 76 homes completed.

Eligibility is based on household income; we encourage all low-income families or individuals in need of assistance to apply. Staff are available to assist families and individuals who apply for the year-round program.

The following 4 responses are from some of the individuals and families that received assistance through EICAP's Weatherization program. All agreed that the work was satisfactory and that the job site was cleaned upon completion.

76

Households  
received  
weatherization  
assistance

4,316

Households  
assisted to  
receive utility  
assistance



*The following 4 responses are from some of the individuals and families that received assistance through EICAP's Weatherization program. All agreed that the work was satisfactory and that the job site was cleaned upon completion.*

"I saved between 25% and 30% on my heating bill."

### Jefferson County

"The weatherization work made a huge difference; I notice a difference in my home on the second night."

### Bonneville County

"After the weatherization work had been completed, I was able to turn my thermostat down 5 degrees and be comfortable."

### Fremont County

"The weatherization work reduced my heating bill by 35%."

### Jefferson County

12

# Building a stronger community one **PARTNER** at a time.

## Senior Services Contracted Providers

Ashton Senior Center  
Idaho Falls Senior Community Center  
Lost River Senior Center  
Mackay Senior Citizens Center  
Madison County Senior Center  
Rigby Senior Center  
Ririe Senior Citizens Center  
Salmon Valley Senior Center  
South Fremont Senior Citizens Center  
Seniors West of the Tetons  
West Jefferson Senior Citizens Center

William Cobbley Senior Center (Challis)  
Lemhi Co Economic Development Association (LCEDA)  
Assisting Hands Home Care  
Personal Home Care  
Premium Choice Home Care  
QualiCare, Inc  
Idaho Legal Aid  
United Way of Bonneville County  
AS Long Nutrition (Dietician Services)  
Regence Blue Shield

## Partnership List

36

Non- Profit

5

Faith Based

29

Local Government

9

State Government

5

Federal Government

11

School Districts

7

Statewide Associations  
or Collaborations

2

Financial/Banking  
Institutions

11

Institutions of Post-  
Secondary Education/  
Training

240

For-Profit Business or  
Corporation

20

Health Service  
Organizations



# Building a stronger community one **VOLUNTEER** at a time.

**21,350**

**Total Number of  
Volunteer Hours  
Donated by  
individuals with  
low incomes**

**22,419**

**Total Volunteer  
Hours Donated to  
the Agency**

**190**

**Hours volunteered  
by  
Volunteer  
Assistant  
Ombudsmen**

**432**

**Miles volunteered  
by  
Volunteer  
Assistant  
Ombudsmen**

## Why Should I Volunteer?

The experiences and memories acquired when sharing your time and helping others is invaluable. It benefits both parties. You may:

- Gain the satisfaction of making a difference in someone's life and our community
- Have fun and meet new people
- Challenge your attitudes and beliefs
- Experience team work
- Develop life and work place skills
- Demonstrate responsibility and dependability to future employment opportunities
- Explore career opportunities and enhance your resume
- Improve your self-confidence
- Grow personally
- Expand your community networks

<http://www.eicap.org/volunteer>

## How to Get Involved:

There are volunteer activities that range from 1-2 hours each week to an occasional special project that might involve 10-12 hours of your time. We will consider new activities as well as fundraising events should you have any other ideas and talents that you wish to share.

**Head Start Program** - Needs volunteers to assist in the classroom and during family literacy programs and special events.

**VOICE** - Improves the quality of care and makes a difference in the lives of elders who live in long-term-care facilities. Volunteers are trained and assigned to a facility to visit weekly, advocate and help solve problems for residents.

**SMP** - Senior Medicare Patrol trains volunteers to assist Medicare beneficiaries and their families avoid, detect, and prevent health care fraud.

## Opportunities to Volunteer available in the Family & Emergency Services Department

Volunteers needed to assist at the EICAP Food Pantries. Volunteers who wish to volunteer will be given instructions and training. For more information contact:

**Rexburg Food Pantry**

208-356-8849

**Salmon & Challis Food Pantry**

208-756-3999

# Building a stronger community one **EMPLOYEE** at a time.

The following certifications are held by EICAP staff that increase agency capacity.

**1**

**National  
Certified ROMA  
Implementers**

**2**

**Certified  
Community Action  
Professionals (CCAP)**

**18**

**Staff with child  
development  
certifications**

**7**

**Staff with family  
development  
certifications**

**3**

**Staff with  
Home Energy  
Professional  
Certifications**



# Building a stronger community one **EDUCATION** at a time.

## Angela Magnani Tuition Assistance Program

	# of Students	Total Amount
January-23	27	\$ 26,610.00
April-23	29	\$ 27,063.33
September-23	32	\$ 27,959.00
<b>Total</b>	<b>88</b>	<b>\$ 81,632.33</b>

8

# of individuals who  
obtained Bachelor  
Degrees

2

# of individuals who  
obtained a vocational  
certificate

To Whom It May Concern,

I am writing this letter to express my heartfelt gratitude for contributing to the Angela Magnani Wood Program. I am beyond honored to have been selected as the recipient of this generous funding. I'm so appreciative of your support.

I am a freshman at Brigham Young University - Idaho. I am currently majoring in Communication with an emphasis in video production, and my expected graduation date is the Winter of 2026. By then, my goal is to be working at a video production company as an editor and start planning to start my own company. Thanks to you, I am one step closer to that goal.

Thank you again for your thoughtful and kind gift. In the future, I also want to give back to others just as you have helped me.

It is an honor to be chosen and awarded the Angela Magnani Wood Program tuition assistance for my last semester at Brigham Young University Idaho! The \$1,000 will be put towards my education in receiving a bachelor's degree in Social Work. I am just one semester away from graduating and fulfilling my dream to help and enhance the well-being of others. Following graduation, my next goal is to become a LCSW- licensed clinical social worker! Thank you for helping me make these milestones happen.

I am truly grateful for this scholarship. It will allow me to work less so that I am able to focus on my classes and continue getting good grades. Thank you for the support!

Dear Angela Magnani Wood Program,

My name is Brayden Smith, and I am truly honored and thankful to be one of this year's recipients for the *Angela Magnani Wood Program* scholarship award. I would like to personally thank you for this generous contribution, which I will now be able to continue to pursue BA in Mechanical Engineering at Idaho State University without any hassles.

Currently I am in my second year of Mechanical Engineering with an emphasis in Nuclear Power and Energy Systems. My dedication and passions for mechanics and knowing how things work has allowed me to be on the presidents list for 2 consecutive years at the College of Eastern Idaho as well as graduating with honors in high school and high honors at CEI. In addition to my academic achievements, I was involved in speech and debate throughout high school in which I made it to state and became a Lincoln Douglas captain on the debate team. I plan on being involved in the rocket club at Idaho State University as well. I also hope to be an intern at the local Idaho National Laboratory these next few summers. After my scheduled graduation I plan to pursue a career as a Mechanical Engineer at the Idaho National Laboratory or even work in the nuclear department.

My educational pursuit would not have been possible without the generous support and donation that *Angela Magnani Wood Program* has provided me. Thank you once again for supporting me towards reaching my fullest professional and personal potential.

# Food Pantry & Energy Assistance Thank You Letters

Comments / How can we better serve you?

Can't, they already do a great job. Awesome team of people working here. Thank you all so very much and Happy Holidays to you all.

Comments / How can we better serve you?

I AM ENTIRELY SATISFIED WITH THE MANNER IN WHICH ECAP HAS HELPED ME AND I DO NOT KNOW HOW THEY COULD DO BETTER!

Comments / How can we better serve you?

Best & most professional help anywhere!!!  
I am VERY happy & appreciative with the assistance I received!!! THANK YOU! ☺

Comments / How can we better serve you?

This program has helped me so much since 1982.

Comments / How can we better serve you?

I don't feel judged here & I feel heard & helped when I voice my needs here. Thank you guys for being kind.

Comments / How can we better serve you?

I think this program you have is awesome. willing and able to help anyone in need.

If you would like to be contacted about any of the previous questions, please fill in your name and

# 2022 Financial Audit Results

**WIPFLI**

## Independent Auditor's Report

Board of Directors  
Eastern Idaho Community Action Partnership, Inc. and Affiliates  
Idaho Falls, Idaho

### ***Report on the Audit of the Consolidated Financial Statements***

#### ***Opinion***

We have audited the accompanying consolidated financial statements of Eastern Idaho Community Action Partnership, Inc. and Affiliates, a nonprofit organization, which comprise the Consolidated Statement of Financial Position as of October 31, 2022, and the related Consolidated statements of activities, functional expenses, and cash flows for the year then ended, and the related notes to the consolidated financial statements.

In our opinion, the accompanying consolidated financial statements present fairly, in all material respects, the financial position of Eastern Idaho Community Action Partnership, Inc. and Affiliates as of October 31, 2022, and the changes in their net assets and their cash flows for the year then ended in accordance with accounting principles generally accepted in the United States of America.

#### ***Basis for Opinion***

We conducted our audit in accordance with auditing standards generally accepted in the United States and the standards applicable to financial audits contained in *Government Auditing Standards*, issued by the Comptroller General of the United States. Our responsibilities under those standards are further described in the Auditor's Responsibilities for the Audit of the Consolidated Financial Statements section of our report. We are required to be independent of Eastern Idaho Community Action Partnership, Inc. and Affiliates and to meet our other ethical responsibilities, in accordance with the relevant ethical requirements relating to our audit. We believe that the audit evidence we have obtained is sufficient and appropriate to provide a basis for our audit opinion. The financial statements of the affiliates of Eastern Idaho Community Action Partnership, Inc., were not audited in accordance with *Government Auditing Standards*.

### ***Responsibilities of Management for the Consolidated Financial Statements***

Management is responsible for the preparation and fair presentation of the consolidated financial statements in accordance with accounting principles generally accepted in the United States of America, and for the design, implementation, and maintenance of internal control relevant to the preparation and fair presentation of consolidated financial statements that are free from material misstatement, whether due to fraud or error.

In preparing the consolidated financial statements, management is required to evaluate whether there are conditions or events, considered in the aggregate, that raise substantial doubt about Eastern Idaho Community Action Partnership, Inc. and Affiliates' ability to continue as a going concern for one year after the date the financial statements are available to be issued.

# Financial Report Continued

## ***Auditor's Responsibilities for the Audit of the Consolidated Financial Statements***

Our objectives are to obtain reasonable assurance about whether the consolidated financial statements as a whole are free from material misstatement, whether due to fraud or error, and to issue an auditor's report that includes our opinion. Reasonable assurance is a high level of assurance but is not absolute assurance and therefore is not a guarantee that an audit conducted in accordance with generally accepted auditing standards and *Government Auditing Standards* will always detect a material misstatement when it exists. The risk of not detecting a material misstatement resulting from fraud is higher than for one resulting from error, as fraud may involve collusion, forgery, intentional omissions, misrepresentations, or the override of internal control. Misstatements are considered material if there is a substantial likelihood that, individually or in the aggregate, they would influence the judgment made by a reasonable user based on the consolidated financial statements.

In performing an audit in accordance with generally accepted auditing standards and *Government Auditing Standards*, we:

- Exercise professional judgment and maintain professional skepticism throughout the audit.
- Identify and assess the risks of material misstatement of the consolidated financial statements, whether due to fraud or error, and design and perform audit procedures responsive to those risks. Such procedures include examining, on a test basis, evidence regarding the amounts and disclosures in the consolidated financial statements.
- Obtain an understanding of internal control relevant to the audit in order to design audit procedures that are appropriate in the circumstances, but not for the purpose of expressing an opinion on the effectiveness of Eastern Idaho Community Action Partnership, Inc. and Affiliates' internal control. Accordingly, no such opinion is expressed.
- Evaluate the appropriateness of accounting policies used and the reasonableness of significant accounting estimates made by management, as well as evaluate the overall presentation of the consolidated financial statements.
- Conclude whether, in our judgment, there are conditions or events, considered in the aggregate, that raise substantial doubt about Eastern Idaho Community Action Partnership, Inc. and Affiliates' ability to continue as a going concern for a reasonable period of time.

We are required to communicate with those charged with governance regarding, among other matters, the planned scope and timing of the audit, significant audit findings, and certain internal control–related matters that we identified during the audit.



# Financial Report Continued

## ***Supplementary Information***

Our audit was conducted for the purpose of forming an opinion on the consolidated financial statements as a whole. The supplementary information appearing on pages 25-29, which includes the accompanying schedule of expenditures of federal awards, Schedule A, as required by Title 2 U.S. *Code of Federal Regulations* (CFR) Part 200, *Uniform Administrative Requirements, Cost Principles, and Audit Requirements for Federal Awards*, are presented for purposes of additional analysis and are not a required part of the consolidated financial statements. Such information is the responsibility of management and was derived from and relates directly to the underlying accounting and other records used to prepare the consolidated financial statements. The information has been subjected to the auditing procedures applied in the audit of the consolidated financial statements and certain additional procedures, including comparing and reconciling such information directly to the underlying accounting and other records used to prepare the consolidated financial statements or to the consolidated financial statements themselves, and other additional procedures in accordance with auditing standards generally accepted in the United States. In our opinion, the information is fairly stated in all material respects in relation to the consolidated financial statements as a whole.

## ***Other Reporting Required by Government Auditing Standards***

In accordance with *Government Auditing Standards*, we have also issued our report dated May 23, 2023 on our consideration of the Eastern Idaho Community Action Partnership, Inc.'s internal control over financial reporting and on our tests of its compliance with certain provisions of laws, regulations, contracts and grant agreements and other matters. The purpose of that report is solely to describe the scope of our testing of internal control over financial reporting and compliance and the results of that testing, and not to provide an opinion on the effectiveness of Eastern Idaho Community Action Partnership, Inc.'s internal control over financial reporting or on compliance. That report is an integral part of an audit performed in accordance with *Government Auditing Standards* in considering the Eastern Idaho Community Action Partnership, Inc.'s internal control over financial reporting and compliance.



Wipfli LLP

Madison, Wisconsin  
May 23, 2023

# Birth to Five Program

## Proposed Budget & Services

### ACTUAL 2023

Head Start & Early Head Start Federal Grant	\$ 5,031,613.17
USDA Revenue	\$ 85,823.31
TANF Grant	\$ 101,212.22
United Way Grant	\$ 13,125.00
Non-Federal Share	\$ 569,021.11

### Head Start & Early Head Start

Salaries and Benefits	\$ 3,426,666.66
Professional Fees and Consultants	\$ 40,724.58
Misc.	\$ 842,048.22
Supplies	\$ 545,598.97
Occupancy	\$ 73,164.58
Training	\$ 103,410.16
<b>Total</b>	<b>\$ 5,031,613.17</b>

### BUDGET 2024

Head Start & Early Head Start Federal Grant	\$ 5,350,869.00
USDA Revenue	\$ 176,466.00
TANF Grant	\$ 158,872.00
United Way Grant	\$ 0.00
Non-Federal Share	\$ 1,337,717.25

### Head Start & Early Head Start

Salaries and Benefits	\$ 4,414,077.00
Professional Fees and Consultants	\$ 98,331.00
Misc.	\$ 354,826.00
Supplies	\$ 181,824.00
Occupancy	\$ 126,735.00
Training	\$ 175,076.00
<b>Total</b>	<b>\$ 5,350,869.00</b>

# Birth to Five Program

## 2022-2023 School Year Report

<b>83</b>	Total number of Head Start children
<b>75</b>	Total number of Head Start families
<b>14</b>	Total number of Early Head Start children
<b>13</b>	Total number of Early Head Start families
<b>27,819</b>	Total Meals Served to Head Start children

### Head Start:

<b>85.2</b>	Percentage of average monthly enrollment
<b>97.2</b>	Percentage of children with health insurance
<b>73.3</b>	Percentage of children enrolled that received medical exams
<b>85.3</b>	Percentage of children enrolled that received dental exams
<b>90.8</b>	Percentage of enrolled children that received up-to-date immunization

### Early Head Start:

<b>85.1</b>	Percentage of average monthly enrollment
<b>88.9</b>	Percentage of children with health insurance
<b>50</b>	Percentage of children enrolled that received medical exams
<b>88.8</b>	Percentage of children enrolled that received dental exams
<b>100</b>	Percentage of enrolled children that received up-to-date immunization



# Birth to Five Program

## 2022-2023 School Year Report

### Efforts to prepare children for kindergarten

EICAP's efforts to prepare children for kindergarten during the 2020 – 2021 school year can be summarized as follows while in the throes of a worldwide pandemic and teaching the children virtually for several months out of the school year.

- 1** Provide a research based curriculum that the Head Start and Early Head Start Teachers teach from. The curriculums are:
  - a. Frog Street imbedded with Conscious Discipline
  - b. Second Step
  - c. Child Protection Unit (Head Start Only)
- 2** Provide research based screenings.
  - a. ASQ-3 (Ages and Stages Questionnaires) for Developmental
  - b. DECA for Social/Emotional twice a year for Seasonal Head Start and three times a year for Early Head Start and Duration
- 3** Use a research based assessment tool to monitor children's progress towards Kindergarten Readiness.
  - a. DRDP (Desired Results Developmental Profile) in ChildPlus
- 4** All families receive two education home visits and two education parent teacher conferences a year. On these visits information is provided individually to families to help work on their children's skills at home and school. Individual Goals are set for each child by the parents and the curriculums support the growth of the child's knowledge towards mastery of these skills.

### EICAP School Readiness Goals:

#### *Approaches to Learning*

1. Children will participate in and complete tasks and activities, projects and experiences with curiosity.

#### **Social Emotional**

1. Children engage in positive interactions with adults and peers in a variety of situations, including everyday routines.
2. The child uses basic problem-solving and negotiation skills to resolve conflicts with other children and adults.

## Language and Literacy

1. Children will engage in language during conversation, songs, stories and other learning experiences.
2. Children will demonstrate receptive language skills by discriminating and identifying sounds in spoken language.
3. Children will show awareness of print in various settings and understand different functions of printed forms.

## Cognition and Science

1. Children will develop reasoning, memory, problem-solving, and thinking skills to understand and organize their world.

## Math

1. Children will associate number concepts, vocabulary, quantities, and numerals.
2. Children will understand attributes and relative properties as related to size, capacity, and area.

## Perceptual, Motor, and Physical Development

1. Children will develop gross motor skills to explore their environment and experiment with different ways of moving their bodies.
2. Children will demonstrate responsive eating patterns during mealtimes.

## Parent Involvement Activities

Throughout the 2022-2023 school year each of our centers sent home worksheets with the families. These sheets have ideas of items they can work on with children while at home. We also encourage parents to volunteer in the center and participate in parent meetings. In addition, every month each center does a parent involvement activity (parent meeting). During this time, they provide trainings for parents and activities for the parent and child to do together. Some activities each center has done are listed below:

- Back to school- welcome parents- Breakfast
- Policy council voting, pumpkin painting night
- Parent Breakfast- Literacy activity- books given
- Second-step child protection unit- for parents
- Father involvement- ABC's of discipline
- Parent breakfast- Winter painting
- Parent breakfast- Ready Rosie program overview
- Pajama Day - heart activity
- Car building-race track activity with dads
- Mental health parent night- Ostermiller- Bingham college of massage therapy
- Parent Breakfast- Tucker Turtle activity
- Positive parenting activity
- Parent Breakfast- Literacy activity with Library
- Graduation Celebration- parent breakfast- Child presentation
- Standdown for the Homeless
- Falls River Resource Fair
- Ammon Days
- Iona Days
- Roaring Youth Jam
- Preschool Fair
- Pumpkin Walk
- Christmas Tree decorating Downtown.
- Cinco de Mayo
- BYU-I Portfolio Interviews Child Development
- BYU-I Career Day Panel
- IHSA-Board Vice Chair
- Family Development Institute
- Regional Early Childhood Committee
- BYU-I Child Development Exit Interviews
- Pumpkin Painting for the Pumpkin Walk
- Literacy night DINovember
- Winter Festival, books, and crafts
- Ostermiller Mental Health
- Family art night
- Introduction to First Aid/ CPR
- Eat Smart Idaho Nutrition information and Budget Friendly Meals
- End-of-the-year celebration
- Family game night
- Breakfast with family
- Policy Council



# Birth to Five Program Report Continued

## EICAP Head Start/Early Head Start Finalized Checkpoint Data aligned with the School Readiness Goals:

### Seasonal Centers

Percentages and numbers from the DRDP Group Progress Report show that our Seasonal Centers observed 36 children in the Spring Checkpoint. Below are the results in each area of study.

- **Approaches to Learning -- Self-Regulation**

In the Fall checkpoint there are 5 out of 36 children above the median expectations for a percentage of 14% in the areas of Building Middle to Integrating Earlier. In the Spring there are 20 out of 36 children above the median expectations for a percentage of 56% in the areas of Building Middle to Integrating Earlier.

- **Social and Emotional Development**

In the Fall checkpoint there are 13 out of 36 children above the median expectations for a percentage of 36% in the areas of Building Later to Integrating Earlier. In the Spring there are 17 out of 36 children above the median expectations for a percentage of 47% in the areas of Building Later to Integrating Earlier.

- **Language and Literacy Development**

In the Fall checkpoint there are 3 out of 36 children above the median expectations for a percentage of 8% in the areas of Building Middle to Integrating Earlier. In the Spring there are 21 out of 36 children above the median expectations for a percentage of 58% in the areas of Building Middle to Integrating Earlier.

- **Cognition, Including Math and Science**

In the Fall checkpoint there are 2 out of 36 children above the median expectations for a percentage of 5% in the areas of Building Later to Integrating Earlier. In the Spring there are 22 out of 36 children above the median expectations for a percentage of 61% in the areas of Building Later to Integrating Earlier.

- **Physical Development -- Health**

In the Fall checkpoint there are 9 out of 36 children above the median expectations for a percentage of 25% in the areas of Building Later to Integrating Earlier. In the Spring there are 29 out of 36 children above the median expectations for a percentage of 81% in the areas of Building Later to Integrating Earlier.

- **History -- Social Science**

In the Fall checkpoint there are 16 out of 36 children above the median expectations for a percentage of 44% in the areas of Building Later to Integrating Earlier. In the Spring there are 30 out of 36 children above the median expectations for a percentage of 83% in the areas of Building Later to Integrating Earlier.

- **Visual and Performing Arts**

In the Fall checkpoint there are 17 out of 36 children above the median expectations for a percentage of 47% in the areas of Building Later to Integrating Earlier. In the Spring there are 32 out of 36 children above the median expectations for a percentage of 89% in the areas of Building Later to Integrating Earlier.

- **English Language Development**

In the Fall checkpoint there are 4 out of 4 children above the median expectations for a percentage of 100% in the areas of Integrating English. In the Spring there are 5 out of 5 children above the median expectations for a percentage of 100% in the areas of Building Middle to Integrating Earlier.



## Duration Centers

Percentages and numbers from the DRDP Group Progress Report show that our Duration Centers observed 24 children in the Summer Checkpoint. Below are the results in each area of study.



- **Approaches to Learning -- Self-Regulation**

In the Fall checkpoint there are 3 out of 16 children above the median expectations for a percentage of 19% in the areas of Building Middle to Integrating Earlier. In the Summer there are 11 out of 16 children above the median expectations for a percentage of 69% in the areas of Building Middle to Integrating Earlier.

- **Social and Emotional Development**

In the Fall checkpoint there are 4 out of 16 children above the median expectations for a percentage of 25% in the areas of Building Later to Integrating Earlier. In the Spring there are 11 out of 16 children above the median expectations for a percentage of 69% in the areas of Building Later to Integrating Earlier.

- **Language and Literacy Development**

In the Fall checkpoint there are 8 out of 19 children above the median expectations for a percentage of 42% in the areas of Building Middle to Integrating Earlier. In the Spring there are 12 out of 19 children above the median expectations for a percentage of 63% in the areas of Building Middle to Integrating Earlier.

- **Cognition, Including Math and Science**

In the Fall checkpoint there are 4 out of 16 children above the median expectations for a percentage of 25% in the areas of Building Later to Integrating Earlier. In the Spring there are 10 out of 16 children above the median expectations for a percentage of 63% in the areas of Building Later to Integrating Earlier.

- **Physical Development -- Health**

In the Fall checkpoint there are 4 out of 16 children above the median expectations for a percentage of 25% in the areas of Building Later to Integrating Earlier. In the Spring there are 12 out of 16 children above the median expectations for a percentage of 75% in the areas of Building Later to Integrating Earlier.

- **History -- Social Science**

In the Fall checkpoint there are 7 out of 16 children above the median expectations for a percentage of 44% in the areas of Building Later to Integrating Earlier. In the Spring there are 9 out of 16 children above the median expectations for a percentage of 56% in the areas of Building Later to Integrating Earlier.

- **Visual and Performing Arts**

In the Fall checkpoint there are 7 out of 16 children above the median expectations for a percentage of 44% in the areas of Building Later to Integrating Earlier. In the Spring there are 9 out of 16 children above the median expectations for a percentage of 56% in the areas of Building Later to Integrating Earlier.

- **English Language Development**

In the Fall checkpoint there are 1 out of 1 child above the median expectations for a percentage of 100% in the areas of Integrating English. In the Spring there are 1 out of 1 child above the median expectations for a percentage of 100% in the area of Integrating English.

# Birth to Five Program Report Continued

## Early Head Start Centers

Percentages and numbers from the DRDP Group Progress Report show that our Early Head start Centers observed 13 children in the Summer Checkpoint. Below are the results in each area of study.

- **Approaches to Learning -- Self-Regulation**

In the Fall checkpoint there are 5 out of 12 children above the median expectations for a percentage of 42% in the areas of Exploring Later to Building Earlier. In the Summer there are 9 out of 13 children above the median expectations for a percentage of 69% in the areas of Exploring Later to Building Earlier.

- **Social and Emotional Development**

In the Fall checkpoint there are 5 out of 12 children above the median expectations for a percentage of 23% in the areas of Exploring Later to Building Earlier. In the Spring there are 7 out of 13 children above the median expectations for a percentage of 53% in the areas of Exploring Later to Building Earlier.

- **Language and Literacy Development**

In the Fall checkpoint there are 7 out of 12 children above the median expectations for a percentage of 58% in the areas of Exploring Later to Building Earlier. In the Spring there are 9 out of 13 children above the median expectations for a percentage of 69% in the areas of Exploring Later to Building Earlier.

- **Cognition, Including Math and Science**

In the Fall checkpoint there are 4 out of 13 children above the median expectations for a percentage of 31% in the areas of Exploring Later to Building Earlier. In the Spring there are 5 out of 13 children above the median expectations for a percentage of 38% in the areas of Build Exploring Later to Building Earlier.

- **Physical Development -- Health**

In the Fall checkpoint there are 9 out of 12 children above the median expectations for a percentage of 75% in the areas of Exploring Later to Building Earlier. In the Spring there are 10 out of 13 children above the median expectations for a percentage of 77% in the areas of Exploring Later to Building Earlier.

## The Description of Developmental Levels for EHS & HS

The number of levels in a measure varies depending on the competencies that are appropriate for that measure's developmental continuum. The levels are organized under four categories from early infancy up to kindergarten entry: Responding, Exploring, Building, and Integrating:

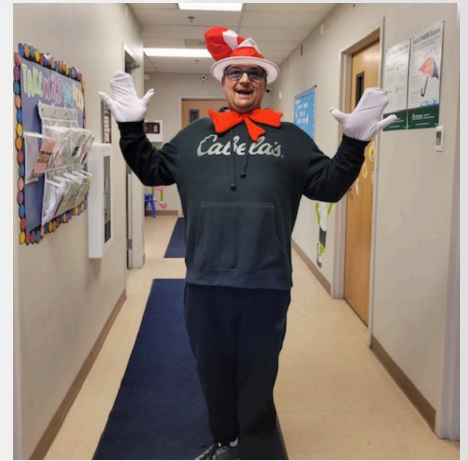
**Responding (Earlier, Later)** Knowledge, skills, or behaviors that develop from basic responses (through using senses and through actions) to differentiated responses. Children generally engage in back-and-forth interactions with familiar adults and communicate through nonverbal messages.

**Exploring (Earlier, Middle, Later)** Knowledge, skills, or behaviors that include active exploration including purposeful movement, purposeful exploration and manipulation of objects, purposeful communication, and the beginnings of cooperation with adults and peers. Children generally begin this period by using nonverbal means to communicate and, over time, grow in their ability to communicate verbally or use other conventional forms of language.

**Building (Earlier, Middle, Later)** Knowledge, skills, or behaviors that demonstrate growing understanding of how people and objects relate to one another, how to investigate ideas, and how things work. Children use language to express thoughts and feelings, to learn specific early literacy and numeracy skills, and to increasingly participate in small group interactions and cooperative activities with others.

**Integrating (Earlier)** Knowledge, skills, or behaviors that demonstrate the ability to connect and combine strategies in order to express complex thoughts and feelings, solve multi-step problems, and participate in a wide range of activities that involve social-emotional, self-regulatory, cognitive, linguistic, and physical skills. Children begin to engage in mutually supportive relationships and interactions. Note that the developmental levels for the ELD domain differ from the above format as they represent the developmental progression for the acquisition of English as a second language during the early childhood years.







# Events



*apply now*

THE  
**ENERGY ASSISTANCE**  
SEASON IS IN FULL SWING!

**NOVEMBER 1, 2022 - MARCH 31, 2023**

Contact your local EICAP office today!

<b>IDAHO FALLS</b> 935 E Lincoln Rd Idaho Falls, ID 83401 208 522-5391 ealif@eicap.org	<b>REXBURG</b> 275 Stationary Place Rexburg, ID 83440 208 356-8849 fsrexburg@eicap.org	<b>SALMON</b> 955 River Front Dr, Ste A Salmon, ID 83467 208 756-3999 fssalmon@eicap.org
--	--	--

**DON'T MISS OUT**

The  
*Energy Assistance*  
Season

is scheduled to end **March 31, 2023**

Contact your local EICAP office today!

<b>IDAHO FALLS</b> 935 E Lincoln Rd Idaho Falls, ID 83401 208 522-5391 ealif@eicap.org	<b>REXBURG</b> 275 Stationary Place Rexburg, ID 83440 208 356-8849 fsrexburg@eicap.org	<b>SALMON</b> 955 River Front Dr, Ste A Salmon, ID 83467 208 756-3999 fssalmon@eicap.org
--	--	--

*Do you need help with  
water/sewer bills?*

THE  
**WATER ASSISTANCE PROGRAM**  
WILL BE ENDING  
**JUNE 30, 2023**

Contact your local EICAP office today to see if your  
utility vendors are participating!

<b>IDAHO FALLS</b> 935 E Lincoln Rd Idaho Falls, ID 83401 208 522-5391 ealif@eicap.org	<b>REXBURG</b> 275 Stationary Place Rexburg, ID 83440 208 356-8849 fsrexburg@eicap.org	<b>SALMON</b> 955 River Front Dr, Ste A Salmon, ID 83467 208 756-3999 fssalmon@eicap.org
--	--	--

**TRAINING TUESDAY**



Community Action Agencies  
provide financial skills training that  
help families improve economic  
stability and build assets.



COMMUNITY ACTION MONTH

**FIRST ANNUAL  
AMMON  
NOGATHON**

Saturday November 11th  
2:00 PM  
McCowan Park

One-mile fun run on a quarter-mile course, with runners  
drinking 8 oz. of eggnog per lap. Participants will receive a  
t-shirt and swag bag. Spectators can donate a non-perishable  
food item, unwrapped toy, or winter clothing to receive a free  
Kneaders french toast card. Runners who dress in a holiday  
costume have a chance for an extra prize!

\$10 Entry Fee  
Register at: [nogathon.cityofammon.us](http://nogathon.cityofammon.us)

**1 MILE  
32 OUNCES**




11 AM - 1 PM

Join Us!

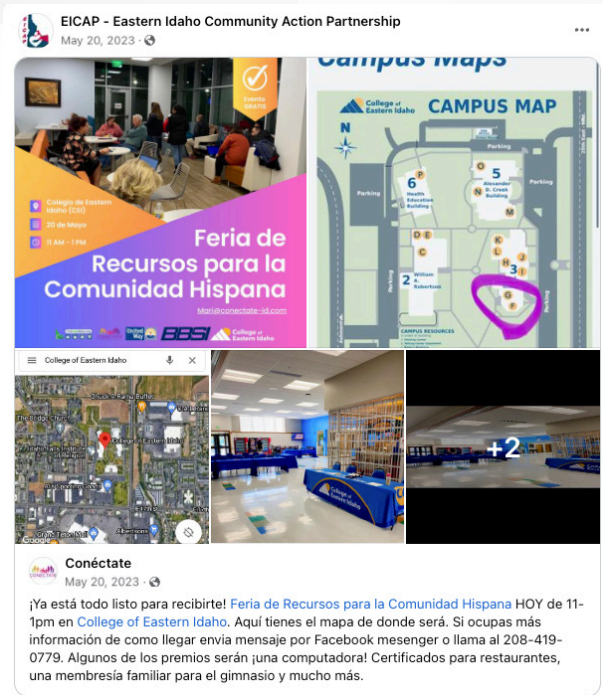
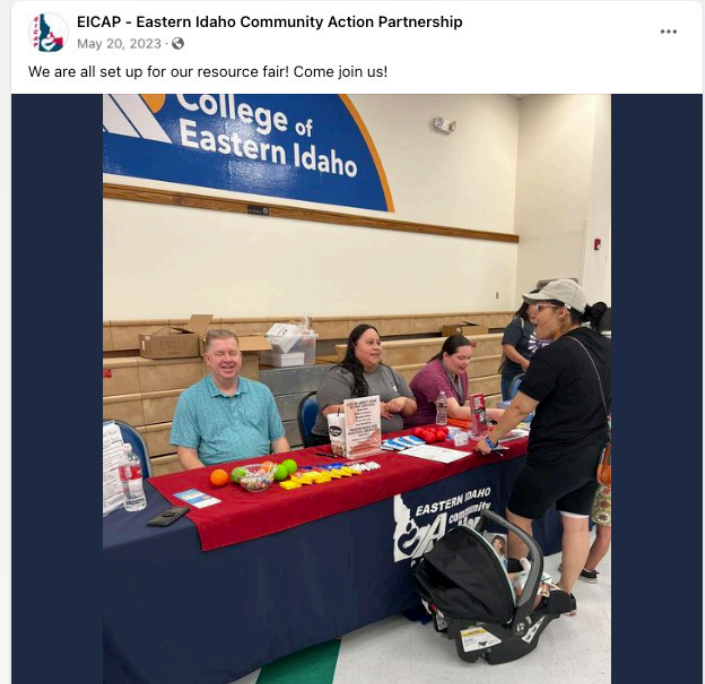
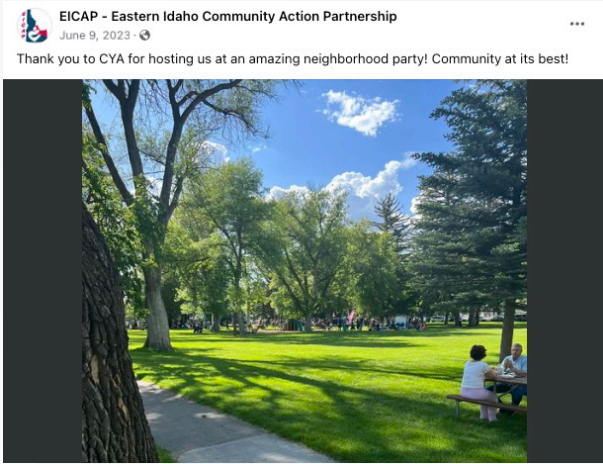
- FREE & food will be provided
- CEI-College of Eastern Idaho

*Hispanic*  
**COMMUNITY  
RESOURCE FAIR**

[Mari@conectate-id.com](mailto:Mari@conectate-id.com)









# Contact Us

## Main Office

935 E Lincoln Rd  
Idaho Falls, ID 83401

Tel: 208-522-5391  
or 1-800-632-4813

## Outreach Office

Lemhi & Custer Counties  
955 Riverfront Drive, Ste A  
Salmon, ID 83467

Tel: 208-756-3999  
or 1-800-359-9163

## Rexburg / Upper Valley Office

275 Stationery Place  
Rexburg, ID 83440

Tel: 208-356-8849

Visit our website at: [www.eicap.org](http://www.eicap.org)

Follow us on Facebook