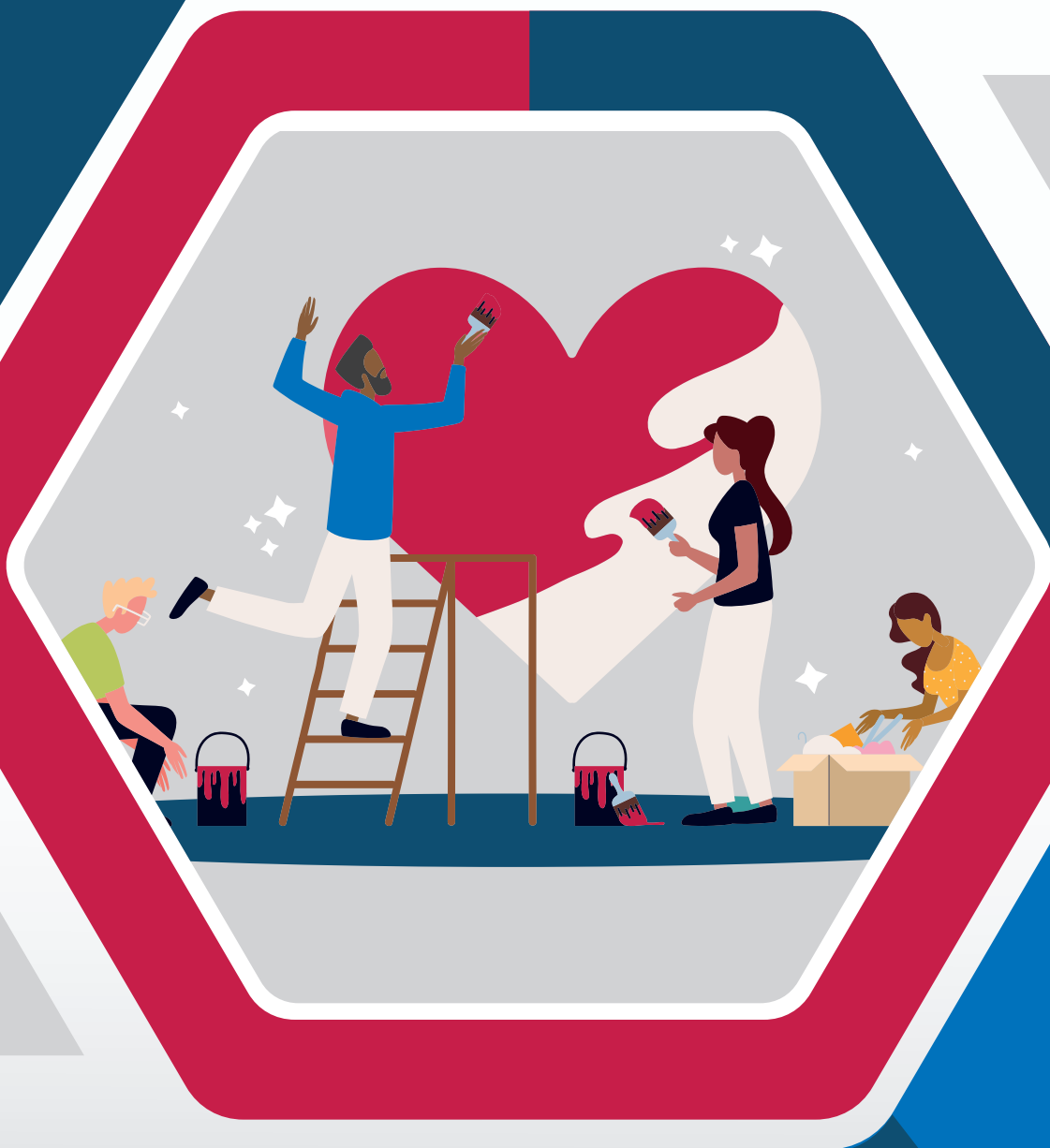


ANNUAL REPORT 2025



Eastern Idaho
Community
Action Partnership



*Helping Eastern Idahoans facing
economic disadvantages **thrive**
– through support, resources,
and education.*

TABLE OF CONTENTS

- 1** Letter from the Chief Executive Officer
- 2** Letter from the Board President
- 3** Community Action Promise and Mission Statement
- 4** The EICAP Strategic Plan
- Results: Statistics and Success Stories of Building a Stronger Community...
- 5** One Life at a Time
- 7** One Child at a Time
- 9** One Meal at a Time
- 11** One Home at a Time
- 13** One Partnership at a Time
- 14** One Volunteer at a Time
- 15** One Employee at a Time
- 16** One Education at a Time
- 17** One Donation at a Time
- 18** 2024 Report - Financial Audit Results
- 21** Birth to Five - Proposed Budget and Services
- 23** Birth to Five 2024-2025 School Year Report
- 31** Event Photos

From the **CHIEF EXECUTIVE OFFICER**



EICAP was tested by difficulty, resistance, and uncertainty this past year, and we emerged larger, stronger, and more capable of meeting our mission. Political upheaval and prolonged federal disruption challenged the systems that fund and support our work in 2025. Yet, because of the steady work of our Board and the commitment of our staff, we expanded our reach and are now positioned to thrive. During this time, the Board made a community-focused decision to use reserve funds to sustain Head Start through the first month of the 2026 fiscal year during the longest government shutdown to date. That Board action protected children, families, and employees when stability mattered most.

Despite these challenges, the work continued and progress was made. We were awarded the Idaho Commission on Aging contract to serve all of Eastern Idaho, expanding our responsibility to older adults across the region and affirming the trust placed in EICAP's leadership—doubling the size of our Senior Services division in clients served, counties covered, and employees served. We also successfully emerged from the Head Start Full Enrollment Initiative, strengthening one of our most impactful programs after years of focused effort. These accomplishments did not happen by chance; they reflect persistence, learning, and a shared belief in the value of the services we provide.

This year also marked continued progress on our Strategic Plan. We improved pay and benefits, renewed Head Start, and further strengthened the reach and recognition of EICAP. The EICAP name and its influence in our communities have never been stronger. The generosity and outreach of The Church of Jesus Christ of Latter-day Saints' Giving Machines, along with other media campaigns, expanded our visibility and helped more families know that EICAP is here to support them through economic hardship. We refined the Rental Assistance program launched last year, using flexible CSBG resources to better serve individuals and families facing eviction and housing insecurity. We also piloted several social enterprise initiatives to explore ways to generate stabilizing, flexible funding for the future.

Looking ahead, we are encouraged by the momentum we are carrying into the new year. That hope is reinforced by a record-breaking Giving Machine campaign that raised more than \$290,000, made possible through months of preparation and relationship-building throughout the summer and fall.

We also move forward guided by newly adopted statements that reflect both who we are and where we are going. Our mission is helping Eastern Idahoans facing economic disadvantages thrive—through support, resources, and education. Our vision is a future where everyone in our community can prosper—one full of opportunity, dignity, and connection.

Because of our Board, our staff, and the community that stands with us, EICAP remains capable of meeting this mission—one person, one family, and one community at a time.

Thanks,

John Radford, CEO

Eastern Idaho Community Action Partnership, Inc.

From the **BOARD PRESIDENT**



In the summer of 1988, fires burned across nearly 800,000 acres of Yellowstone. For weeks, the smoke was visible from backyards here in Eastern Idaho, and many of us wondered whether the park we loved would ever come back. What came next surprised almost everyone. The lodgepole pine, the tree that defines so much of Yellowstone's forest, carries cones sealed shut by resin. Those cones only open under extreme heat. The very fires that looked like destruction were, for the lodgepole, the mechanism that released the next generation of seeds. Within a year, green shoots were pushing through the ash. Today, those stands are tall, healthy, and full of life.

I have come back to that image often when I think about EICAP's 2025.

This was a year of real heat. Political upheaval and the longest federal government shutdown in American history tested the systems that fund and support our work. For a Community Action agency, that kind of uncertainty is not abstract. It shows up in questions about whether Head Start classrooms can stay open, whether seniors get their meals, whether families facing eviction get help in time. During the shutdown, the Board voted as a body to use reserve funds to sustain Head Start through the first month of the 2026 fiscal year. It was a real risk, and one we were willing to take, because protecting children, families, and employees in that moment is exactly what we stand for.

And yet, like the lodgepole, EICAP did not simply endure 2025. We grew. We were awarded the Idaho Commission on Aging contract to serve all of Eastern Idaho, effectively doubling our Senior Services division in clients served, counties covered, and employees supported. Head Start is thriving again, with full enrollment restored thanks to everyone in the program, from leadership to teachers to the support staff who make each classroom run. We refined our rental assistance program, piloted social enterprise initiatives to build more flexible funding for the future, and closed the year with the Giving Machine campaign that raised nearly \$300,000 for our neighbors.

None of that happens without the people who do the work. To our staff, the teachers, case managers, drivers, weatherization crews, maintenance teams, cooks, and administrators who kept showing up through the noise and uncertainty of this year — thank you. You are the reason EICAP's name and reach in Eastern Idaho have never been stronger. To our volunteers, donors, community partners, and sister organizations, your steadiness in a turbulent year made the difference between surviving and thriving. And to our leadership team, thank you for navigating this year with clear eyes and a steady hand.

Looking ahead, I am encouraged. Our newly adopted mission statement — "Helping Eastern Idahoans facing economic disadvantages thrive through support, resources, and education." — is not just words on a page. It is a promise, and one we are positioned to keep. The fire of 2025 did not slow us down. It opened our next stage of growth.

Regan Muir, Board President

EICAP Board of Directors

Community Action Promise

Community Action changes people's lives, embodies the spirit of hope, improves communities, and makes America a better place to live. We care about the entire community, and we are dedicated to helping people help themselves and each other.

EICAP's Mission Statement

Helping Eastern Idahoans facing economic disadvantages **thrive** – through support, resources, and education.

The EICAP 2024—2028 STRATEGIC PLAN

Closing the EICAP Covid Chapter

The New EICAP Chapter—Renewing & Growing

New EICAP Mission & Values

The EICAP Strategic Pillars

- 1.** The people of EICAP empower families, providing programs that foster self-sufficiency.
- 2.** The people of EICAP educate young children, teaching essential skills in a caring environment.
- 3.** The people of EICAP serve at risk individuals, offering essential services to meet basic needs.

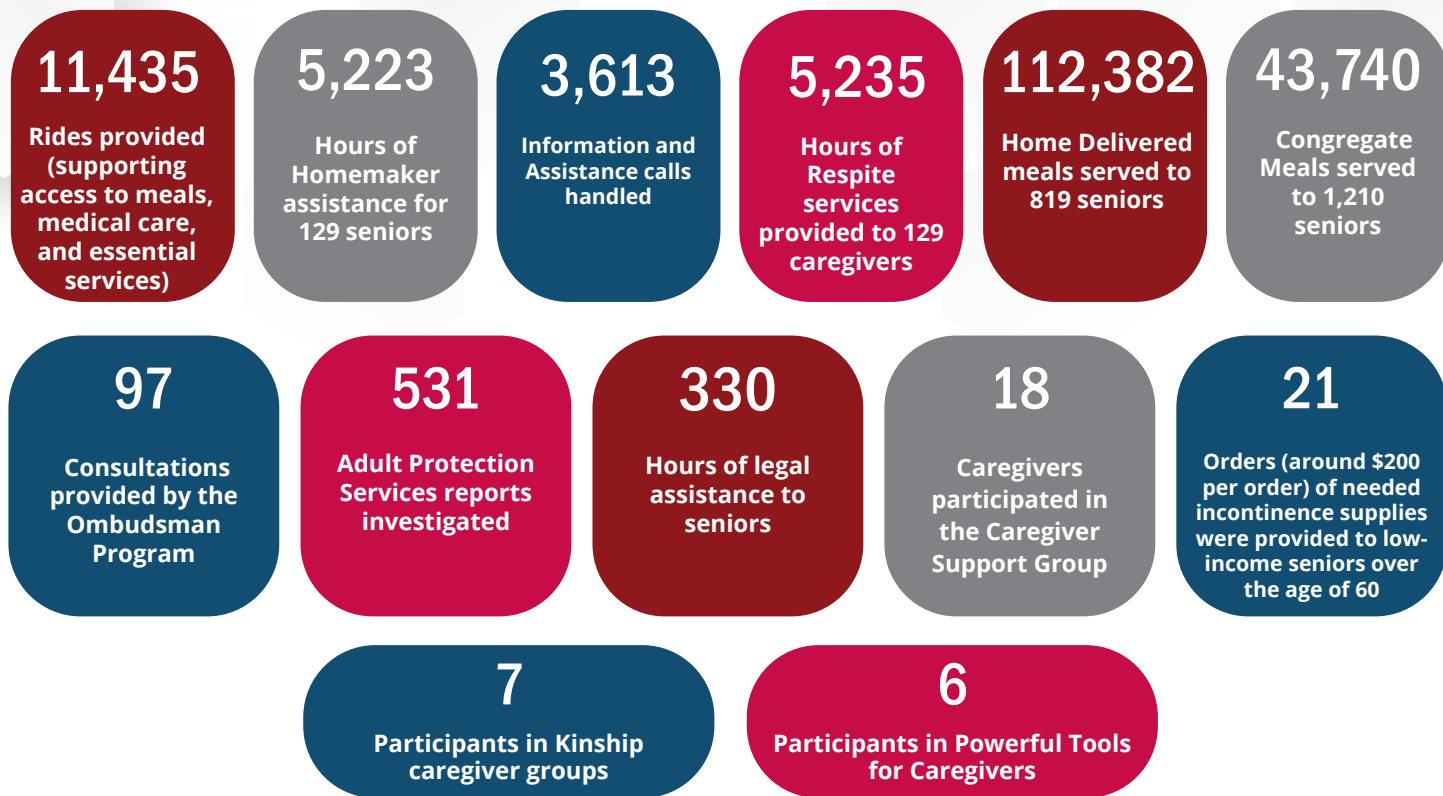
The EICAP 2024—2028 Strategic Initiatives

- 1.** Foster Strong & Stable EICAP Workforce
- 2.** Renew & Expand Head Start
- 3.** Create Regional EICAP Awareness & Engagement
- 4.** Seek Charitable Support & Establish Social Enterprise Revenue Streams
- 5.** Add Select Mission-Centered Programs

The EICAP Short-Term Task Force Initiatives

- 1.** Mission, Values & Vision Stakeholders
- 2.** EICAP Housing Paradigm Report
- 3.** Regional Realignment Task Force
- 4.** Board Selection & Election Process Task Force
- 5.** EICAP Regional Convening Agency

Building a stronger community



Area Agency on Aging

Senior Services: Supporting Independence, Safety, and Connection

During the past year, EICAP Senior Services supported thousands of older adults and caregivers across Eastern Idaho with essential services that promote independence, safety, and quality of life. From daily meals and transportation to protective services and caregiver support, Senior Services continues to serve as a trusted access point for aging resources throughout the region.

Nutrition programs remained a cornerstone of service delivery. More than 112,000 home-delivered meals helped older adults remain safely in their homes, while congregate meal sites served as hubs for nutrition, social connection, and early identification of additional needs. Transportation services supported access to these programs, as well as medical appointments and community activities, with over 11,000 rides provided throughout the year.

In-home services such as homemaker and respite care continued to play a critical role for older adults and caregivers. Demand for these services remained high, reflecting both the growing older adult population and the increasing complexity of needs among those aging at home. Caregiver support programs provided targeted, high-touch assistance to family caregivers navigating challenging circumstances.

one LIFE at a time.

18,897

Total unduplicated number of all INDIVIDUALS served

856

The number of Seniors (60+) who maintained an independent living situation.

71

The number of individuals who avoided eviction

4

Individuals assisted with medical expenses

433

The number of individuals with disabilities who maintained an independent living situation.

3,305

The number of individuals with prevention of loss of energy services

41

Individuals obtained safe and affordable housing

173

Individuals maintain safe and affordable housing for 90 days

983

The number of individuals with utilities reconnected

Senior Services also carried significant responsibility in protection and advocacy. Adult Protective Services investigated more than 500 reports, and the Long-Term Care Ombudsman Program addressed nearly 100 cases, ensuring the rights, safety, and dignity of older adults. Information and Assistance staff handled thousands of calls, serving as the front door to the aging network and connecting individuals to timely resources and support.

These services were made possible through strong partnerships with senior centers, service providers, legal aid, and community organizations across the region. As EICAP prepares for the upcoming consolidation of service areas, Senior Services remains focused on maintaining uninterrupted services while strengthening systems, partnerships, and capacity to meet future needs.

Community Partnerships

Senior services are delivered in collaboration with 20+ community partners, including senior centers, home care agencies, and Idaho Legal Aid, ensuring services reach older adults across rural and frontier communities.

Why This Work Matters

For many older adults, a meal, a ride, or a phone call is more than a service, it is stability. Senior Services help older adults remain at home, support caregivers under real strain, and step in quickly when safety or rights are at risk. Consistent demand across nutrition, transportation, and protective services shows how essential these supports are for individuals and communities across Eastern Idaho.

Building a stronger community



Head Start Program

EICAP's Head Start and Early Head Start program provides fun and engaging, high-quality, educational services to children ages 0 to 5 throughout 5 centers. Our Early Head Start centers provide comprehensive early child development for infants and toddlers ages birth to 3. We operate one Early Head Start Center in Idaho Falls and one Early Head Start center in Blackfoot. Our Head Start centers focus on school readiness by enhancing children's cognitive, social, and emotional development from ages 3 to 5. We operate two Head Start centers in Idaho Falls, one in Blackfoot, and one in Rexburg.

Within the classroom, staff are dedicated to keeping children safe and helping children grow, while ensuring the children in our care are kindergarten ready. Head Start is the nation's premier pre-school program, differing from others, because services are not limited to the classroom or the child. Our support staff works with the families to foster relationships, build upon families' strengths, help families set goals, support the family's well-being, and increase self-sufficiency. We strive in helping parents understand their important role in being their child's first, and most influential teacher! Parents and caregivers are encouraged to be involved in their child's education so they can bring the love of learning from the classroom to their home.



one **CHILD** at a time.



Building a stronger community

3,769

of TEFAP food boxes distributed (The Emergency Food Assistance Program)

3,791

of boxes distributed with Community Donations

939

of CSFP food boxes distributed. (Commodity Supplemental Food Program for Seniors)

Salmon Food Pantry

The Salmon office is dedicated to assisting community members in need. Whether that need is education, heat assistance, food, or just information on who to talk to next. We strive every day to provide our clients with a positive interaction and with the knowledge to improve their circumstances. We partner with a variety of community members from businesses, other nonprofits, and schools to individual community members that wish to be part of building their community up and assisting those most vulnerable.

- **1,596** – TEFAP – Food Boxes distributed
- **1,462** – Community Donations – Food boxes with Community Donations distributed
- **365** – CSFP – Food Boxes distributed



Food Pantry Donations



one **MEAL** at a time.

Challis Food Pantry

- **465** – TEFAP – Food Boxes distributed
- **424** – Community Donations – Food boxes with Community Donations distributed
- **67** – CSFP – Food Boxes distributed

Challis Food Pantry



Rexburg Food Pantry

- **1,417** – TEFAP – Food Boxes distributed
- **1,371** – Community Donations – Food boxes with Community Donations distributed
- **392** – CSFP – Food Boxes distributed



Fall River Electric Annual Food Pantry Donation



Food Pantry donation from DWI in Rexburg

Building a stronger community

4,217

Eligible households received LIHEAP (Low Income Home Energy Assistance) services

184

Eligible households received Emergency Energy Assistance (Through Energy Assistance Local Funds)

2,744

Received LIHEAP Heat assistance

66

Project Help - households received assistance using Project Help (City of Idaho Falls)

1,473

Received LIHEAP Crisis assistance

35

Good Neighbor Fund - households received assistance using Good Neighbor Funds (Salmon River Electric)

11,821

Total unduplicated number of all HOUSEHOLDS served

55

Lend A Hand - households received assistance using Lend A Hand (Rocky Mountain Power)

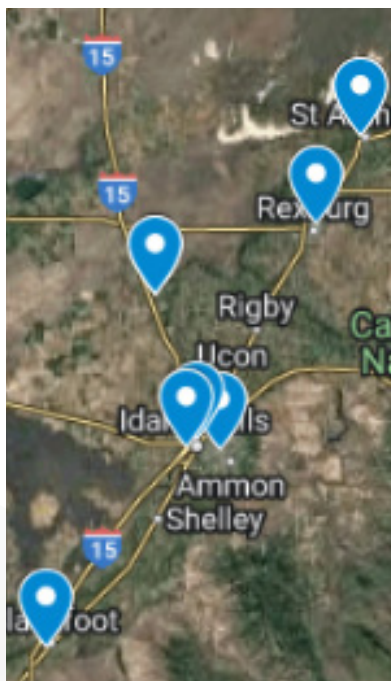
15

Other Funds - households received assistance using other agency funds

Housing

Eastern Idaho Community Action Partnership, Inc. continues to provide affordable housing across Eastern Idaho with 10 properties located in Blackfoot, Idaho Falls, Roberts, Rexburg, and St. Anthony, Idaho. Of the 323 units EICAP owns, 98 units are dedicated to Senior/Disabled individuals and a total of 224 units and one home are dedicated to low-income individuals/families.

We invested in the look and feel of our housing units all while improving safety, by replacing concrete and other critical elements for our residents. It is so helpful to our community that we provide an affordable place to live and thrive. Our housing properties are located in Roberts, Blackfoot, Idaho Falls, St. Anthony and Rexburg. Two of the units have Head Start school buildings adjacent or on the properties. The housing provides warmth and dignity to our residents all at an affordable price.



33

The number of households who avoided eviction

204

Eligible households received rental assistance

13

Project Warmth - households received assistance using Project Warmth (Intermountain Gas)

14

The number of households who obtained safe and affordable housing

190

The number of households who maintained safe and affordable housing

1,841

The number of households who didn't have utilities shut off

11

one HOME at a time.

Weatherization

Weatherization worked on and completed 75 homes with an average cost of \$8,188.00. We served a total of 217 customers, 53 were disabled, 95 were children, and 44 were elderly.

We completed 44 homes in Bonneville County, 2 in Butte County, 2 in Custer County, 7 in Fremont County, 9 in Jefferson County, 2 in Lemhi County, 8 in Madison County, and 1 in Teton County.

Measures that we did include: New windows, new exterior doors, attic, floor and wall insulation, infiltration measures, (this includes, weather stripping old doors, replacing broken glass, sealing heat ducts, replacing dryer vents) we also installed duct insulation, smoke alarms, CO detectors, replaced old refrigerators, repaired or replaced water heaters and heating systems. We spent a total of \$614,100.00 on the 75 homes completed.

Eligibility is based on household income; we encourage all low-income families or individuals in need of assistance to apply. Staff are available to assist families and individuals who apply for the year-round program.



The following 3 responses are from some of the individuals and families that received assistance through EICAP's Weatherization program. All agreed that the work was satisfactory and that the job site was cleaned upon completion.

"Because of the weatherization work and the energy education that the Crew Chief and inspector provided, my heating bill has decreased by 50%"

Madison County

"I feel my home is warmer, my heating bill has been reduced by at least 25%"

Lemhi County

"I asked so many questions and learned so much about how to save on my heating bill that I am actually going to be able to start saving some money, that I haven't been able to do for a long time"

Madison County

Building a stronger community one **PARTNER** at a time.

Partnership List and Contracted Providers:

Ashton Senior Center
 Idaho Falls Senior Community Center
 Lost River Senior Center
 Mackay Senior Citizens Center
 Madison County Senior Center
 Rigby Senior Center
 Ririe Senior Citizens Center
 Salmon Valley Senior Center
 South Fremont Senior Citizens Center
 Seniors West of the Tetons
 West Jefferson Senior Citizens Center

William Cobbley Senior Center (Challis)
 Lemhi Co Economic Development Association (LCEDA)
 Assisting Hands Home Care
 Personal Home Care
 Premium Choice Home Care
 QualiCare, Inc
 Idaho Legal Aid
 United Way of Bonneville County
 AS Long Nutrition (Dietician Services)
 Regence Blue Shield



Building a stronger community one **VOLUNTEER** at a time.

70,799.9

**Total Number of
Volunteer Hours
Donated by
individuals with
low incomes**

71,935.4

**Total Volunteer
Hours Donated to
the Agency**

130.5

**Hours volunteered
by
Volunteer
Assistant
Ombudsmen**

Why Should I Volunteer?

The experiences and memories acquired when sharing your time and helping others is invaluable. It benefits both parties. You may:

- Gain the satisfaction of making a difference in someone's life and our community
- Have fun and meet new people
- Challenge your attitudes and beliefs
- Experience team work
- Develop life and work place skills
- Demonstrate responsibility and dependability to future employment opportunities
- Explore career opportunities and enhance your resume
- Improve your self-confidence
- Grow personally
- Expand your community networks

<http://www.eicap.org/volunteer>

How to Get Involved:

There are volunteer activities that range from 1-2 hours each week to an occasional special project that might involve 10-12 hours of your time. We will consider new activities as well as fundraising events should you have any other ideas and talents that you wish to share.

Head Start Program - Needs volunteers to assist in the classroom and during family literacy programs and special events.

VOICE - Improves the quality of care and makes a difference in the lives of elders who live in long-term-care facilities. Volunteers are trained and assigned to a facility to visit weekly, advocate and help solve problems for residents.

SMP - Senior Medicare Patrol trains volunteers to assist Medicare beneficiaries and their families avoid, detect, and prevent health care fraud.

Opportunities to Volunteer available in the Family & Emergency Services Department

Volunteers needed to assist at the EICAP Food Pantries. Volunteers who wish to volunteer will be given instructions and training. For more information contact:

Rexburg Food Pantry

208-356-8849

Salmon & Challis Food Pantry

208-756-3999

Building a stronger community one **EMPLOYEE** at a time.

The following certifications are held by EICAP staff that increase agency capacity.

1

National
Certified ROMA
Implementers

2

Certified
Community Action
Professionals (CCAP)

13

Staff with Child
Development
Certifications

3

Staff with Family
Development
Certifications

4

Staff with
Home Energy
Professional
Certifications



Outreach event in Salmon



Panel discussion at the Idaho Food Bank Conference



Donation to Custer Cancer Funds



Idaho Falls LIHEAP staff

15

Building a stronger community one **EDUCATION** at a time.

Angela Magnani Tuition Assistance Program
(Assistance provided in FY2025)

	Degree	Certification
January	33	3
February	0	2
April	35	0
July	0	1
August	37	0
September	2	0
Total Assistance payments	107	6

7
of individuals who obtained Bachelor Degrees

3
of individuals who obtained a vocational certificate

THANK YOUS & COMMENTS from the community

I'm not sure who to send this to, so I hope you can direct it to the right place. Your kindness is appreciated.



Happy holidays! We appreciate the work you do & the support you provide your community.

Maren Nelson

Thanks very much for the \$650 to help me pay for expenses during my battle with breast cancer.

It takes a community and I totally appreciate the help.

Dear John, Brenda, et. al.

Thank you for your recent gift to scholarships + summer camps at CEI. We are grateful for the support to these important programs that help the community and our students.

Thanks again!
Dave

Eastern Idaho Community Action,
We wanted to say thank you for all the good you do for our community. The community raised \$525 in the Miracle Box and local businesses matched that, bringing your total to \$1,050.
-Beating the Light Foundation/The Miracle Box

- "I love EICAP"
- "We've been so grateful for the extra help."
- "Eicap has been there to help us in times of crisis."
- "I couldn't be more thankful for everybody. Everyone has been so sweet to me!"
- "Words can not express how grateful we have been for your help. I would not have made it through last winter without your help"

- "Everytime I spoke to someone they were very nice and kind they don't judge"
- "Because of your help, I was able to stay in my home and keep my independence."
- AAA client

Building a stronger community one **DONATION** at a time.

May 15, 2025



What an amazing week celebrating our incredible teachers and staff! We couldn't have done it without the help of our amazing community — THANK YOU to all our generous partners and donors who helped make last week so special! A huge shoutout to the parents and volunteers who stepped up to help us celebrate our educators in style — you made it unforgettable and our staff are so appreciative! Special thanks to these fantastic local businesses for their support and generosity: @Jalisco's by the River @Albertsons-Idaho Falls @Soda Tsunami @Dutch Bros-Idaho Falls @Aladdin's Floral @Panda Express-Idaho Falls @The Cocoa Bean - Bakery, Drinks, Ice Cream @Crumb! Cookie-Idaho Falls @Chick-fil-A Ammon @Poppy & Pout-Idaho Falls We are so grateful for a community that shows up and shines for our teachers!

December 1, 2025

We wanted to share a big thank you to one of our amazing sponsors Kneaders Bakery and Cafe! They made an incredibly generous donation to one our EICAP families by providing them a full Thanksgiving meal! Thank you Kneaders!



December 4, 2025

We are excited to be part of the Rexburg Giving Machines. Come see us on Friday, December 5th starting at 10 am at the Giving Machines located in Hemming Village in Rexburg.



December 10, 2025

From even the littlest hands we send the biggest thank you to those in our community who supported our program and our families this Thanksgiving holiday! Altogether, about 150 full Thanksgiving dinners were donated and distributed to our program by amazing and generous donors in our community, and we couldn't be more thankful! We would like to thank these teams of people for their hard work and generosity, making sure families had food on the table for their Thanksgiving holiday!



2024 Financial Audit Results

WIPFLI

Independent Auditor's Report

Board of Directors
Eastern Idaho Community Action Partnership, Inc. and Affiliates
Idaho Falls, Idaho

Report on the Audit of the Consolidated Financial Statements

Opinion

We have audited the accompanying consolidated financial statements of Eastern Idaho Community Action Partnership, Inc. and Affiliates, a nonprofit organization, which comprise the consolidated statement of financial position as of October 31, 2024, and the related consolidated statements of activities, functional expenses, and cash flows for the year then ended, and the related notes to the consolidated financial statements.

In our opinion, the accompanying consolidated financial statements present fairly, in all material respects, the financial position of Eastern Idaho Community Action Partnership, Inc. and Affiliates as of October 31, 2024, and the changes in their net assets and their cash flows for the year then ended in accordance with accounting principles generally accepted in the United States.

Basis for Opinion

We conducted our audit in accordance with auditing standards generally accepted in the United States and the standards applicable to financial audits contained in *Government Auditing Standards*, issued by the Comptroller General of the United States. Our responsibilities under those standards are further described in the Auditor's Responsibilities for the Audit of the Consolidated Financial Statements section of our report. We are required to be independent of Eastern Idaho Community Action Partnership, Inc. and Affiliates and to meet our other ethical responsibilities, in accordance with the relevant ethical requirements relating to our audit. We believe that the audit evidence we have obtained is sufficient and appropriate to provide a basis for our audit opinion. The financial statements of the affiliates of Eastern Idaho Community Action Partnership, Inc., were not audited in accordance with *Government Auditing Standards*.

Responsibilities of Management for the Consolidated Financial Statements

Management is responsible for the preparation and fair presentation of the consolidated financial statements in accordance with accounting principles generally accepted in the United States, and for the design, implementation, and maintenance of internal control relevant to the preparation and fair presentation of consolidated financial statements that are free from material misstatement, whether due to fraud or error.

In preparing the consolidated financial statements, management is required to evaluate whether there are conditions or events, considered in the aggregate, that raise substantial doubt about Eastern Idaho Community Action Partnership, Inc. and Affiliates' ability to continue as a going concern for one year after the date the consolidated financial statements are available to be issued.

Financial Report Continued

Auditor's Responsibilities for the Audit of the Consolidated Financial Statements

Our objectives are to obtain reasonable assurance about whether the consolidated financial statements as a whole are free from material misstatement, whether due to fraud or error, and to issue an auditor's report that includes our opinion. Reasonable assurance is a high level of assurance but is not absolute assurance and therefore is not a guarantee that an audit conducted in accordance with generally accepted auditing standards and *Government Auditing Standards* will always detect a material misstatement when it exists. The risk of not detecting a material misstatement resulting from fraud is higher than for one resulting from error, as fraud may involve collusion, forgery, intentional omissions, misrepresentations, or the override of internal control. Misstatements are considered material if there is a substantial likelihood that, individually or in the aggregate, they would influence the judgment made by a reasonable user based on the consolidated financial statements.

In performing an audit in accordance with generally accepted auditing standards and *Government Auditing Standards*, we:

- Exercise professional judgment and maintain professional skepticism throughout the audit.
- Identify and assess the risks of material misstatement of the consolidated financial statements, whether due to fraud or error, and design and perform audit procedures responsive to those risks. Such procedures include examining, on a test basis, evidence regarding the amounts and disclosures in the consolidated financial statements.
- Obtain an understanding of internal control relevant to the audit in order to design audit procedures that are appropriate in the circumstances, but not for the purpose of expressing an opinion on the effectiveness of Eastern Idaho Community Action Partnership, Inc. and Affiliates' internal control. Accordingly, no such opinion is expressed.
- Evaluate the appropriateness of accounting policies used and the reasonableness of significant accounting estimates made by management, as well as evaluate the overall presentation of the consolidated financial statements.
- Conclude whether, in our judgment, there are conditions or events, considered in the aggregate, that raise substantial doubt about Eastern Idaho Community Action Partnership, Inc. and Affiliates' ability to continue as a going concern for a reasonable period of time.

We are required to communicate with those charged with governance regarding, among other matters, the planned scope and timing of the audit, significant audit findings, and certain internal control related matters that we identified during the audit.

Financial Report Continued

Supplementary Information

Our audit was conducted for the purpose of forming an opinion on the consolidated financial statements as a whole. The supplementary information appearing on pages 26-30, which includes the schedule of expenditures of federal awards, Schedule A, as required by Title 2 U.S. *Code of Federal Regulations* (CFR) Part 200, *Uniform Administrative Requirements, Cost Principles, and Audit Requirements for Federal Awards*, are presented for purposes of additional analysis and are not a required part of the consolidated financial statements. Such information is the responsibility of management and was derived from and relates directly to the underlying accounting and other records used to prepare the consolidated financial statements. The information has been subjected to the auditing procedures applied in the audit of the consolidated financial statements and certain additional procedures, including comparing and reconciling such information directly to the underlying accounting and other records used to prepare the consolidated financial statements or to the consolidated financial statements themselves, and other additional procedures in accordance with auditing standards generally accepted in the United States. In our opinion, the information is fairly stated in all material respects in relation to the consolidated financial statements as a whole.

Other Reporting Required by Government Auditing Standards

In accordance with *Government Auditing Standards*, we have also issued our report dated May 23, 2025 on our consideration of Eastern Idaho Community Action Partnership, Inc.'s internal control over financial reporting and on our tests of its compliance with certain provisions of laws, regulations, contracts and grant agreements and other matters. The purpose of that report is solely to describe the scope of our testing of internal control over financial reporting and compliance and the results of that testing, and not to provide an opinion on the effectiveness of Eastern Idaho Community Action Partnership, Inc.'s internal control over financial reporting or on compliance. That report is an integral part of an audit performed in accordance with *Government Auditing Standards* in considering Eastern Idaho Community Action Partnership, Inc.'s internal control over financial reporting and compliance.

Wipfli LLP

Wipfli LLP

Madison, Wisconsin

May 23, 2025

Birth to Five Program

PROPOSED BUDGET & SERVICES

ACTUAL 2025

Head Start Federal Grant	\$ 5,305,173.00
USDA Revenue	\$ 201,114.31
TANF Grant	\$ 213,250.29
Non-Federal Share	\$ 1,738,972.02

BUDGET 2025

Head Start Federal Grant	\$ 5,475,173.00
USDA Revenue	\$ 114,029.00
TANF Grant	\$ 184,871.00
Non-Federal Share	\$ 1,368,793.25

Head Start & Early Head Start

Salaries and Benefits	\$ 4,215,098.25
Professional Fees and Consultants	\$ 46,529.17
Misc.	\$ 286,469.43
Supplies	\$ 228,896.90
Occupancy	\$ 417,773.25
Training	\$ 110,406.00
Total	\$ 5,305,173.00

Head Start & Early Head Start

Salaries and Benefits	\$ 4,537,768.08
Professional Fees and Consultants	\$ 65,722.00
Misc.	\$ 257,707.23
Supplies	\$ 154,962.42
Occupancy	\$ 275,210.42
Training	\$ 188,802.78
Total	\$ 5,475,173.00

\$170,000 remains for the purchase of a new delivery truck.

Birth to Five Program

2024-2025 SCHOOL YEAR REPORT

138	Total number of Head Start children
127	Total number of Head Start families
75	Total number of Early Head Start children
65	Total number of Early Head Start families
51,409	Total Meals Served

Head Start:

93%	Percentage of average monthly enrollment
95%	Percentage of children with health insurance
60%	Percentage of children enrolled that received medical exams
93%	Percentage of children enrolled that received dental exams
96%	Percentage of enrolled children that received up-to-date immunization

Early Head Start:

93%	Percentage of average monthly enrollment
100%	Percentage of children with health insurance
88%	Percentage of children enrolled that received medical exams
91%	Percentage of children enrolled that received dental exams
95%	Percentage of enrolled children that received up-to-date immunization

Birth to Five Program

2024-2025 SCHOOL YEAR REPORT

Efforts to prepare children for kindergarten

- 1** Provide a research based curriculum that the Head Start and Early Head Start Teachers teach from. The curriculums are:
 - a. Frog Street imbedded with Conscious Discipline
 - b. Second Step
 - c. Child Protection Unit (Head Start Only)
- 2** Provide research based screenings.
 - a. ASQ-3 (Ages and Stages Questionnaires) for Developmental
 - b. DECA for Social/Emotional twice a year for Head Start and three times a year for Early Head Start
- 3** Use a research based assessment tool to monitor children's progress towards Kindergarten Readiness.
 - a. DRDP (Desired Results Developmental Profile) in ChildPlus
- 4** All Head Start families receive two education home visits and two education parent teacher conferences a year. Early Head Start and Duration Head Start families also receive a 3rd Education Parent Teacher Conference. On these visits information is provided individually to families to help work on their children's skills at home and school. Individual Goals are set for each child by the parents and the curriculums support the growth of the child's knowledge towards mastery of these skills.

EICAP School Readiness Goals:

Approaches to Learning

1. Children will participate in and complete tasks and activities, projects and experiences with curiosity.

Social Emotional

1. Children engage in positive interactions with adults and peers in a variety of situations, including everyday routines.
2. The child uses basic problem-solving and negotiation skills to resolve conflicts with other children and adults.

Language and Literacy

1. Children will engage in language during conversation, songs, stories and other learning experiences.
2. Children will demonstrate receptive language skills by discriminating and identifying sounds in spoken language.
3. Children will show awareness of print in various settings and understand different functions of printed forms.

Cognition and Science

1. Children will develop reasoning, memory, problem-solving, and thinking skills to understand and organize their world.

Math

1. Children will associate number concepts, vocabulary, quantities, and numerals.
2. Children will understand attributes and relative properties as related to size, capacity, and area.

Perceptual, Motor, and Physical Development

1. Children will develop gross motor skills to explore their environment and experiment with different ways of moving their bodies.
2. Children will demonstrate responsive eating patterns during mealtimes.



Parent Involvement Activities

Throughout the 2024-2025 school year each of our centers sent home worksheets with the families. These sheets have ideas of items they can work on with children while at home. We also encourage parents to volunteer in the center and participate in parent meetings. In addition, every month each center does a parent involvement activity (parent meeting). During this time, they provide trainings for parents and activities for the parent and child to do together. Some activities each center has done are listed below:

- Back to School- Meet your teacher
- Paint a Pumpkin- Ammon Pumpkin Walk
- Pedestrian Safety Trunk or Treat
- Stone Soup Literacy Night
- Christmas Program
- Flannels & Flapjacks
- Mental Health Night
- Spirit Week
- Stem Night
- Spring Fling- Male Involvement
- Pound Class on the Playground
- Water Party Family Night
- Spring Break Open House
- Child Protection
- Pedestrian Safety trunk or treat
- Storytelling night
- All about family
- Adult self care
- Cultural carnival
- Spring flowers abc gardening
- Eat smart Idaho
- Spirit week
- Safety Community visitor
- Family picture book
- Open house
- Sundae Drive
- Storytime
- Evening of Thankfulness
- Pumpkin Painting
- Trunk or Treat
- Parent Lunches
- Christmas Party
- Graduation Event
- Family Game Night
- Family Culture Night - Everyone brought dishes from their cultures to share!
- Lots of Spirit Weeks
- Nurse Visitor
- Entomologist Visitor (The Bug Guy)
- Police Visitor
- Firehouse Field Trip
- Construction Visitor
- School Bus Visitor
- Safety Unit Parent Night

Birth to Five Program Report Continued

EICAP Head Start/Early Head Start Finalized Checkpoint Data aligned with the School Readiness Goals:

Seasonal Centers

Percentages and numbers from the DRDP Group Progress Report show that our Seasonal Centers observed 21 children in the Spring Checkpoint. Below are the results in each area of study.

- **Approaches to Learning -- Self-Regulation**

In the Fall Checkpoint, there are 1 out of 21 children above the median expectations for a percentage of 4% in the areas of Building Middle to Integrating Earlier. In the Spring Checkpoint, there are 9 out of 20 children above the median expectations for a percentage of 45% in the areas of Building Middle to Integrating Earlier.

- **Social and Emotional Development**

In the Fall Checkpoint, there are 4 out of 21 children above the median expectations for a percentage of 19% in the areas of Building Middle to Integrating Earlier. In the Spring Checkpoint, there are 11 out of 21 children above the median expectations for a percentage of 52% in the areas of Building Middle to Integrating Earlier.

- **Language and Literacy Development**

In the Fall Checkpoint, there are 2 out of 21 children above the median expectations for a percentage of 10% in the areas of Building Middle to Integrating Earlier. In the Spring Checkpoint, there are 9 out of 20 children above the median expectations for a percentage of 45% in the areas of Building Middle to Integrating Earlier.

- **Cognition, Including Math and Science**

In the Fall Checkpoint, there are 1 out of 20 children above the median expectations for a percentage of 5% in the areas of Building Middle to Integrating Earlier. In the Spring Checkpoint, there are 10 out of 20 children above the median expectations for a percentage of 50% in the areas of Building Middle to Integrating Earlier.

- **Physical Development -- Health**

In the Fall Checkpoint, there are 2 out of 21 children above the median expectations for a percentage of 10% in the areas of Building Middle to Integrating Earlier. In the Spring Checkpoint, there are 15 out of 21 children above the median expectations for a percentage of 71% in the areas of Building Middle to Integrating Earlier.

- **History -- Social Science**

In the Fall Checkpoint, there are 11 out of 20 children above the median expectations for a percentage of 55% in the areas of Building Middle to Integrating Earlier. In the Spring Checkpoint, there are 15 out of 20 children above the median expectations for a percentage of 75% in the areas of Building Middle to Integrating Earlier.



- **Visual and Performing Arts**

In the Fall Checkpoint, there are 11 out of 21 children above the median expectations for a percentage of 52% in the areas of Building Middle to Integrating Earlier. In the Spring Checkpoint, there are 19 out of 20 children above the median expectations for a percentage of 95% in the areas of Building Middle to Integrating Earlier.

- **English Language Development**

In the Fall Checkpoint, there are 4 out of 9 children above the median expectations for a percentage of 44% in the areas of Building Middle to Integrating Earlier. In the Spring Checkpoint, there are 8 out of 8 children above the median expectations for a percentage of 100% in the areas of Building Middle to Integrating Earlier.

Duration Centers

Percentages and numbers from the DRDP Progress Report show that our Duration Centers observed 59 children in the Spring Checkpoint. Below are the results in each area of study.

- **Approaches to Learning -- Self-Regulation**

In the Fall Checkpoint, there are 7 out of 60 children above the median expectations for a percentage of 12% in the areas of Building Middle to Integrating Earlier. In the Spring Checkpoint, there are 25 out of 57 children above the median expectations for a percentage of 44% in the areas of Building Middle to Integrating Earlier.

- **Social and Emotional Development**

In the Fall Checkpoint, there are 7 out of 60 children above the median expectations for a percentage of 12% in the areas of Building Middle to Integrating Earlier. In the Spring Checkpoint, there are 35 out of 56 children above the median expectations for a percentage of 63% in the areas of Building Middle to Integrating Earlier.

- **Language and Literacy Development**

In the Fall Checkpoint, there are 6 out of 60 children above the median expectations for a percentage of 10% in the areas of Building Middle to Integrating Earlier. In the Spring Checkpoint, there are 32 out of 57 children above the median expectations for a percentage of 56% in the areas of Building Middle to Integrating Earlier.

Birth to Five Program Report Continued

- **Cognition, Including Math and Science**

In the Fall Checkpoint, there are 6 out of 59 children above the median expectations for a percentage of 10% in the areas of Building Middle to Integrating Earlier. In the Spring Checkpoint, there are 33 out of 57 children above the median expectations for a percentage of 58% in the areas of Building Middle to Integrating Earlier

- **Physical Development -- Health**

In the Fall Checkpoint, there are 6 out of 60 children above the median expectations for a percentage of 10% in the areas of Building Middle to Integrating Earlier. In the Spring Checkpoint, there are 41 out of 59 children above the median expectations for a percentage of 69% in the areas of Building Middle to Integrating Earlier.

- **History -- Social Science**

In the Fall Checkpoint, there are 31 out of 60 children above the median expectations for a percentage of 52% in the areas of Building Middle to Integrating Earlier. In the Spring Checkpoint, there are 49 out of 57 children above the median expectations for a percentage of 86% in the areas of Building Middle to Integrating Earlier.

- **Visual and Performing Arts**

In the Fall Checkpoint, there are 30 out of 55 children above the median expectations for a percentage of 55% in the areas of Building Middle to Integrating Earlier. In the Spring Checkpoint, there are 49 out of 59 children above the median expectations for a percentage of 83% in the areas of Building Middle to Integrating Earlier.

- **English Language Development**

In the Fall Checkpoint, there are 3 out of 7 children above the median expectations for a percentage of 43% in the areas of Building Middle to Integrating Earlier. In the Spring Checkpoint, there are 3 out of 5 children above the median expectations for a percentage of 60% in the areas of Building Middle to Integrating Earlier

Early Head Start Centers

Percentages and numbers from the DRDP Progress Report show that our Early Head Start Centers observed 38 children in the Spring Checkpoint. Below are the results in each area of study.

- **Approaches to Learning -- Self-Regulation**

In the Fall Checkpoint, there are 5 out of 37 children above the median expectations for a percentage of 14% in the area of Building Earlier. In the Spring Checkpoint, there are 18 out of 38 children above the median expectations for a percentage of 47% in the area of Building Earlier.

- **Social and Emotional Development**

In the Fall Checkpoint, there are 5 out of 37 children above the median expectations for a percentage of 14% in the area of Building Earlier. In the Spring Checkpoint, there are 17 out of 38 children above the median expectations for a percentage of 45% in the area of Building Earlier.

- **Language and Literacy Development**

In the Fall Checkpoint, there are 5 out of 37 children above the median expectations for a percentage of 14% in the area of Building Earlier. In the Spring Checkpoint, there are 18 out of 38 children above the median expectations for a percentage of 47% in the area of Building Earlier.

- **Cognition, Including Math and Science**

In the Fall Checkpoint, there are 0 out of 35 children above the median expectations for a percentage of 0% in the area of Building Earlier. In the Spring Checkpoint, there are 18 out of 38 children above the median expectations for a percentage of 47% in the area of Building Earlier.

- **Physical Development -- Health**

In the Fall Checkpoint, there are 5 out of 37 children above the median expectations for a percentage of 14% in the area of Building Earlier. In the Spring Checkpoint, there are 20 out of 38 children above the median expectations for a percentage of 53% in the area of Building Earlier.



Birth to Five Program Report Continued

The Description of Developmental Levels for EHS & HS

The number of levels in a measure varies depending on the competencies that are appropriate for that measure's developmental continuum. The levels are organized under four categories from early infancy up to kindergarten entry: Responding, Exploring, Building, and Integrating:

Responding (Earlier, Later)

Knowledge, skills, or behaviors that develop from basic responses (through using senses and through actions) to differentiated responses. Children generally engage in back-and-forth interactions with familiar adults and communicate through nonverbal messages.

Exploring (Earlier, Middle, Later)

Knowledge, skills, or behaviors that include active exploration including purposeful movement, purposeful exploration and manipulation of objects, purposeful communication, and the beginnings of cooperation with adults and peers. Children generally begin this period by using nonverbal means to communicate and, over time, grow in their ability to communicate verbally or use other conventional forms of language.

Building (Earlier, Middle, Later)

Knowledge, skills, or behaviors that demonstrate growing understanding of how people and objects relate to one another, how to investigate ideas, and how things work. Children use language to express thoughts and feelings, to learn specific early literacy and numeracy skills, and to increasingly participate in small group interactions and cooperative activities with others.

Integrating (Earlier)

Knowledge, skills, or behaviors that demonstrate the ability to connect and combine strategies in order to express complex thoughts and feelings, solve multi-step problems, and participate in a wide range of activities that involve social-emotional, self-regulatory, cognitive, linguistic, and physical skills. Children begin to engage in mutually supportive relationships and interactions. Note that the developmental levels for the ELD domain differ from the above format as they represent the developmental progression for the acquisition of English as a second language during the early childhood years.



Events

EICAP - Eastern Idaho Community Action Partnership is with Senator Jim Risch. ...
August 22, 2025

Thank you to Nick and Kyle from Congressperson Simpson's and Senator Risch's offices for visiting EICAP and touring our facilities and meeting our staff! The tour centered on our Head Start Program! The work of assisting families in their communities to invest in their youth and their education continues thanks to the support of our members of Congress! Working to help every family thrive and to contribute to their local community!



EICAP - Eastern Idaho Community Action Partnership
May 6, 2025

This Teacher Appreciation Day, we recognize the educators who make Head Start possible. Their work goes beyond lessons—they build trust, support families, and help children feel safe, seen, and ready to learn. To all our teachers and staff: thank you for showing up with care, consistency, and commitment!!!!

#TeacherAppreciation #HeadStart #Early Education #ThankYou

EICAP - Eastern Idaho Community Action Partnership
May 29, 2025

We're thankful for our in-home providers, staff, volunteers, and community partners who serve older adults with compassion and care. Together, we make independence possible. ❤️

#ThankfulThursday #CommunityActionMonth #EICAPAAA #SeniorServices



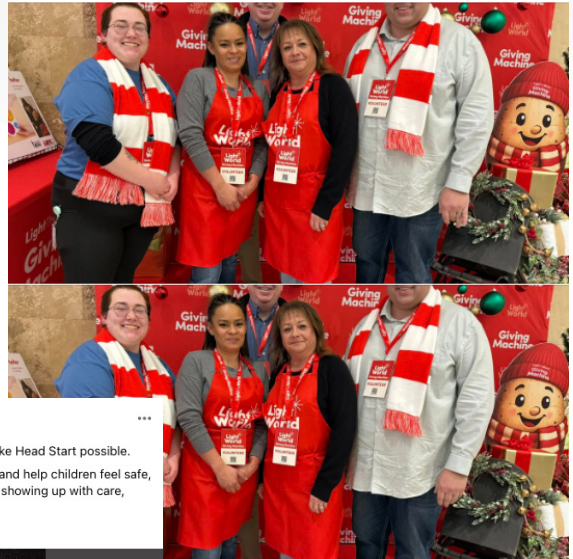
EICAP - Eastern Idaho Community Action Partnership
May 2, 2025

Did you know that students from Head Start Graduate from College 39% more then their peers who did not attend Head Start! Invest in your child's future. Click Below for more information and how to apply. <https://www.eicap.org/head-start>

Their work goes beyond lessons—they build trust, help support families...

EICAP - Eastern Idaho Community Action Partnership
December 16, 2025

Thank you to the Church of Jesus Christ of Latter Day Saints for Lighting the World with the Giving Machines at the Grand Teton Mall. December 15th through Jan 1st. We have amazing opportunities to support EICAP and our programs: the options for EICAP in the Machines- a sensory toy, shoes for a Head Start child, a month of diapers for a family, a month of utilities for a family, senior meals for a week! #LightTheWorld #GivingMachine #IdahoFalls #SeasonOfGiving #eastidaho



Happy 60th Birthday

Celebrating Six Decades of Transforming Lives Through the Head Start Program.

Head Start: Critical to Working Families!

Access to high-quality early childhood education is critical for working families, providing children with a strong educational foundation while enabling parents to pursue employment and career growth.

EICAP - Eastern Idaho Community Action Partnership
June 19, 2025

Thank you to East Idaho News, for the wonderful article about our work! <https://www.facebook.com/share/1D33YxgVFE?mibextid=wwXifr>

EASTIDAHONEWS.COM
East Idaho Community Action Partnership uplifting people through community development
East Idaho News

Head Start **EASTERN IDAHO Community Action Partnership**
INVITES YOU TO THEIR
OPEN HOUSE
WEDNESDAY, AT 935 E LINCOLD RD.
MARCH 26 IDAHO FALLS, ID
10:00 AM TO 2:00PM

FREE ENTRY

Events
 Food, Games, Prizes, Community Providers and much more.

RSVP to Wilbert
 wgarcia@eicap.org or text to 208-716-9533

Homeless Stand Down
 Saturday, November 9th, 2024
 9:00 A.M. to 12:00 P.M.
 Skyline Activity Center
 1575 N. Skyline Dr., Idaho Falls

This annual event allows individuals and families that are homeless, Veterans, and community members that are on the brink of being homeless, at high risk of being homeless, or the majority of their resources are for rent to connect with service providers with resources for housing and other needs.

FREE!! HOT BREAKFAST WILL BE SERVED FROM 9:00-11:00 A.M.	FREE!! Veteran Services Medical Screenings Flu Shots Winter Clothing Cold Weather Gear Food Community Resources
--	---

DONATIONS IN NEED PRIOR TO THE EVENT
 Your donations will be distributed to the homeless at this event.

Items needed for Donation: Clean and Lightly Used Warm Winter Clothing Cold Weather Supplies such as blankets, sleeping bags Food that is easily transportable Such as hot cocoa, soup packets, fruit cups, tuna/crackers, granola bars	Donations can be dropped off Between Nov. 1st to Nov. 8th Idaho Falls Activity Center – West Room 1575 N. Skyline Idaho Falls, ID Monday to Friday 8:00 a.m. to 4:00 p.m.
--	---

Free Transportation is available to the event, but must be scheduled by Friday, 11/1 Club, Inc. at (208) 529-4673 to reserve your ride

YOUTH JAM WEATHER WONDERS
AUGUST 7, 8, & 9, 2025
10AM - 4PM

The Roaring Youth Jam is a fun-filled art festival along the Idaho Falls River Walk. The three-day festival includes art tents and community activities along the east side of the Idaho Falls River Walk where kids (and adults!) can get creative with paint and crafts. There are performances by local acts throughout each day. All activities and events are free!

2025 ART PROJECTS

1. Frozen Paintsicles
2. Cyanotype Sun Print
3. Wind Chime
4. Rain Stick
5. Windsock
6. Pinwheel
7. Watercolor Puddles
8. Earthquake Marble Painting
9. Puffy Paint Clouds
10. Tornado Spin Drawing

Plus...
 • Spiny Bike Hurricane Painting and a Wind Tunnel (by the Info Tent)
 • Coffee Filter Rainbows (Toddler Tent)
 • A huge Milk Jug Igloo (we need 155 milk and water jugs! Please bring your rinsed jugs to ARTium any time between now and August 6)

Performance Schedule
 Live performances take place at the Info Tent, 1575 N. Skyline Dr., Idaho Falls, ID 83401. Shows are free but subject to prior booking.

Day	Time	Artist	Day	Time	Artist
Friday	10:00 AM	Idaho Falls Youth Orchestra	Friday	10:00 AM	Idaho Falls Youth Orchestra
Friday	11:00 AM	Idaho Falls Youth Orchestra	Friday	11:00 AM	Idaho Falls Youth Orchestra
Friday	12:00 PM	Idaho Falls Youth Orchestra	Friday	12:00 PM	Idaho Falls Youth Orchestra
Friday	1:00 PM	Idaho Falls Youth Orchestra	Friday	1:00 PM	Idaho Falls Youth Orchestra
Friday	2:00 PM	Idaho Falls Youth Orchestra	Friday	2:00 PM	Idaho Falls Youth Orchestra
Friday	3:00 PM	Idaho Falls Youth Orchestra	Friday	3:00 PM	Idaho Falls Youth Orchestra
Friday	4:00 PM	Idaho Falls Youth Orchestra	Friday	4:00 PM	Idaho Falls Youth Orchestra

Ammon Days 2024
 Saturday August 3rd
 9:00-4:00 PM
 @ McCowin Park



COTTON CANDY

Head Start will have a Booth, we would LOVE for our parents to join us!

10:00-12:00 We need one more person!
 12:00-2:00 We need 3 people
 2:00-4:00 We need 3 people
 Please let your advocate know if you would like to help.



Face Painting, GIANT Slip n Slides, Bouncy Houses,

Car Show, Hot Air Balloons

Last Call!

THE FINAL DAY TO APPLY FOR

THE WINTER ENERGY ASSISTANCE PROGRAM

IS

FEBRUARY 14, 2025

CONTACT YOUR LOCAL OFFICE OR VISIT OUR WEBSITE WWW.EICAP.ORG

IDAHO FALLS 935 E Lincoln Rd Idaho Falls, ID 83401 208 522-5391 energy@eicap.org	REXBURG 275 Stationary Place Rexburg, ID 83440 208 356-8849 fsrexburg@eicap.org	SALMON 955 River Front Dr. Ste A Salmon, ID 83467 208 756-3999 fssalmon@eicap.org
--	---	---

AMMON DAYS
McCowin Park

Friday August 1st
 6:00 am - Hot Air Balloons
 5:00-8:00 pm - Ammon Has Talent
 8:30 pm-10:00pm - Glow Night

Saturday August 2nd from 9-4
 6:00 am - Hot Air Balloons
 ISO Vendors with Prizes and Giveaways
 Ping Pong Ball Drop-Northwest field, 9:30

Food
 Live band-The Shift from 11-2
 Free Bounce Houses
 Free Zip Line
 Free Face Painting
 Free Mechanical Bull Rides
 Free Archery Range
 Free Giant Slip n Slides
 Free Swimming
 Free Kids Games and crafts
 Car Show

Sunday August 3rd
 6:00 am - Hot Air Balloons

ammondays.cityofammon.us

FREE COMMUNITY EVENT

EICAP - Eastern Idaho Community Action Partnership
 May 1, 2025

May is Older Americans Month!
 This year's theme is "Powered by Connection" — a reminder of the profound impact that meaningful relationships and social connections have on the health and well-being of older adults.
 At EICAP and the Eastern Idaho Area Agency on Aging, we're celebrating the older adults in our lives and community who inspire, lead, and connect. ❤️
 Stay tuned this month as we spotlight the power of connection and share ways you can join us in celebrating older Idahoans.
 #OlderAmericansMonth #PoweredByConnection #EICAP #CommunityActionMonth #AgingStrong

EICAP - Eastern Idaho Community Action Partnership created an event.
 March 25, 2025

Grandparents Raising

Mon, Apr 21, 2025
Grandparents Raising Grandchildren Support Group
 935 E Lincoln Rd, Idaho Falls, ID, United States, Idaho 83401
 1 person went

Interested

OLDER AMERICANS MONTH

FLIP THE SCRIPT ON AGING: MAY 2025

Contact Us

Main Office

935 E Lincoln Rd
Idaho Falls, ID 83401

Tel: 208-522-5391
or 1-800-632-4813

Rexburg / Upper Valley Office

275 Stationery Place
Rexburg, ID 83440

Tel: 208-356-8849

Outreach Office

Lemhi & Custer Counties
955 Riverfront Drive, Ste A
Salmon, ID 83467

Tel: 208-756-3999
or 1-800-359-9163

Visit our website at: www.eicap.org

Follow us on Facebook